

November 15th, 2023

Community Meeting # 1

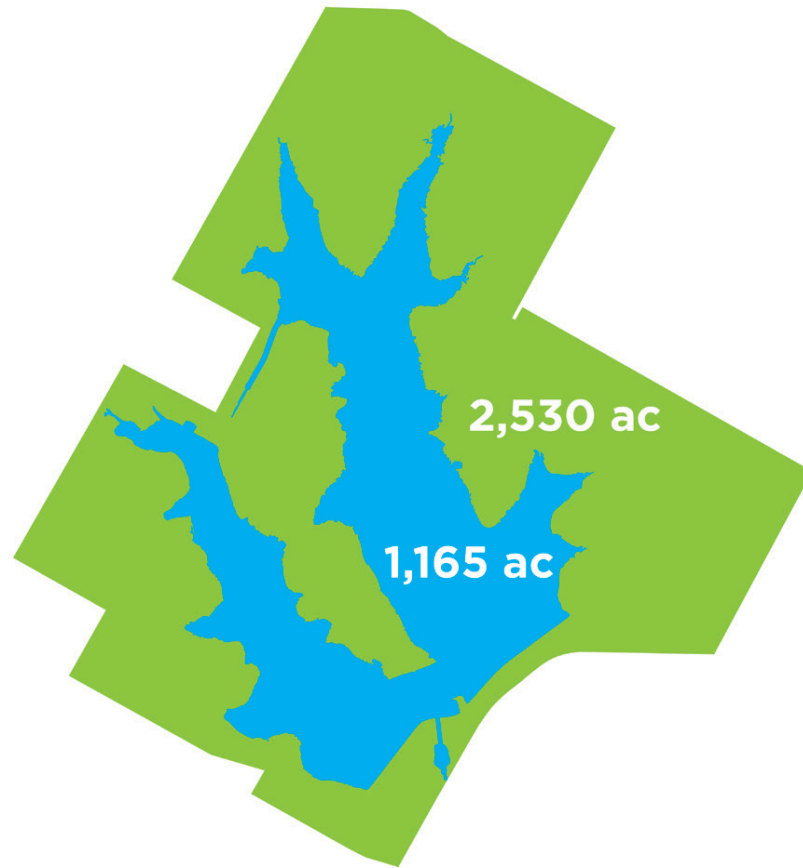
WALTER E. LONG METROPOLITAN PARK IMPLEMENTATION PHASE 1



CIVILITUDE
ENGINEERS & PLANNERS



INTRODUCTIONS AND MEETING PURPOSE



**WALTER E. LONG
METROPOLITAN PARK**

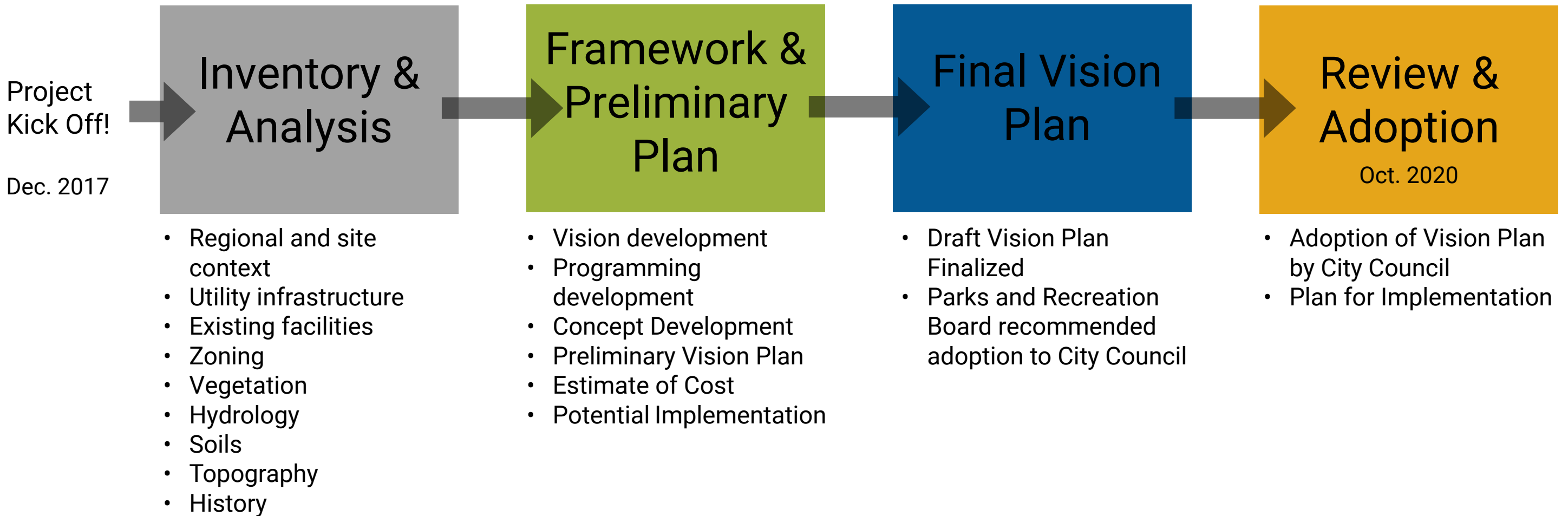
Consultants:

- Rialto Studio Inc. Landscape Architecture
- Civil Engineers – CIVILITUDE ENGINEERS & PLANNERS
- Architecture – CasaBella Architects
- Cost Estimating - AG\CM

Meeting Purpose:

- Update on Implementation of Vision Plan for Walter E. Long Metropolitan Park Phase 1

VISION PLAN PROCESS:



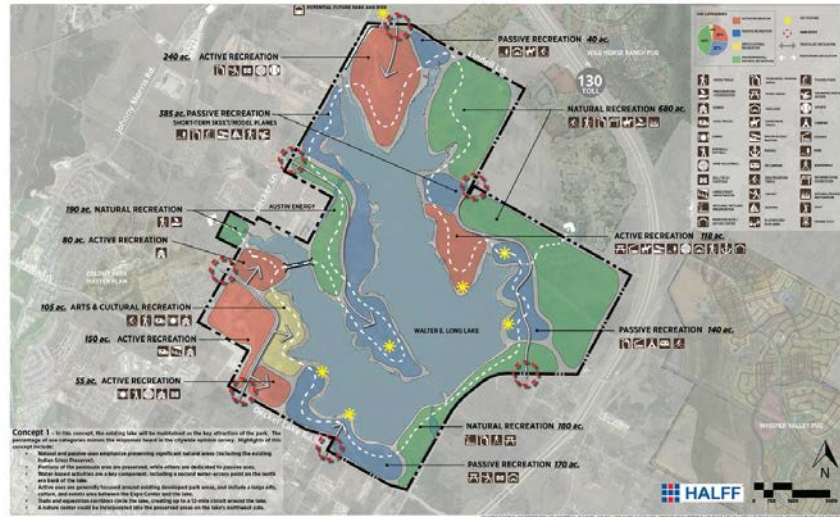
VISION PLAN PROCESS CONT.:

Public Engagement

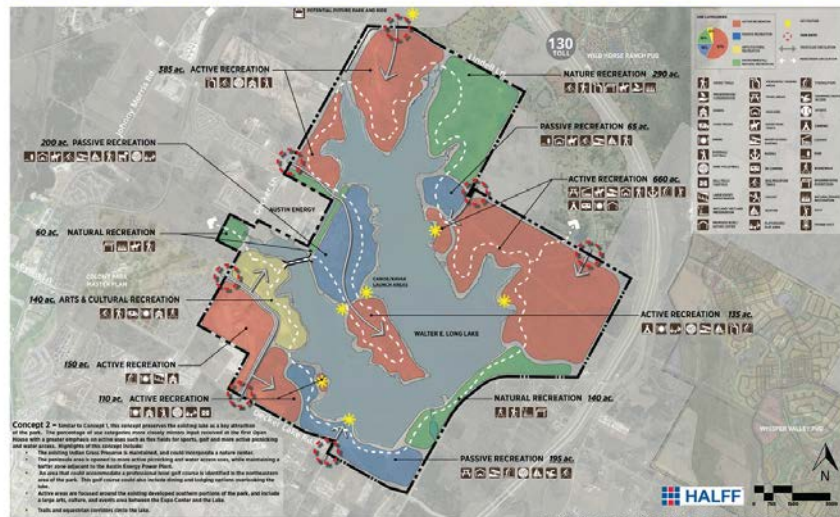


VISION PLAN PROCESS CONT:

FRAMEWORK CONCEPT 1



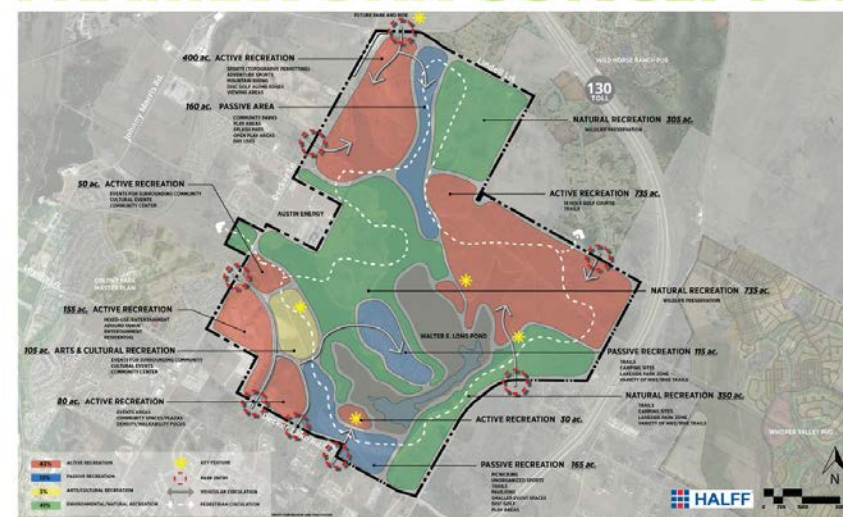
FRAMEWORK CONCEPT 2



FRAMEWORK CONCEPT 3A



FRAMEWORK CONCEPT 3B



The Walter E. Long Metropolitan Park Vision Plan was adopted by Council on October 15, 2020.

The adopted plan is intended to provide the Parks and Recreation Department a blueprint for future development of the park.

- +/- 2530 Acres Walter E. Long Metropolitan Park
- +/- 350 Acres Zilker Metropolitan Park
- +/- 395 Acres Roy G. Guerrero Metropolitan Park

VISION PLAN

The Vision Plan document can be viewed through the City of Austin Parks and Recreation web site.

- E. BOARDWALK FEATURE
- F. MARINA/BOAT LAUNCH
- G. RENT-ABLE FACILITIES
- H. RENT-ABLE CABINS
- I. WELCOME/VISITOR CENTER
- J. NATURE CENTER
- K. BEACH ZONE
- L. THINKING TREE
- M. WESTERN BRIDGE
- N. PEDESTRIAN BRIDGE
- O. PARKING
- P. SKATEBOARD COURT
- Q. CAMPING AREA (INCLUDES PRIMITIVE)
- R. OVERLOOK
- S. EVENT VENUE & INTERPRETATIVE CENTER
- T. CENTRAL PLAZA
- U. PROMENADE
- V. TERRACED SEATING FEATURE
- W. RV CAMPING AREA
- X. PEDESTRIAN BRIDGE
- Y. ADVENTURE ROPES COURSE
- Z. OBSERVATION POINT/TOWER
- AA. OBSERVATION POINT/TOWER
- AB. PARK VISITOR CENTER/GATEWAY FEATURE
- AC. LOOP TRAIL
- AD. MULTI-USE/EQUESTRIAN TRAILS
- AE. PARK ROAD
- AF. EXPO CENTER
- AG. EXPO ARENA
- AH. EQUESTRIAN PASTURE
- AI. DISC GOLF
- AL. RESEARCH FACILITY
- AM. WATERFRONT EVENT SPACE & GARDENS
- AN. SOLAR ART PIECE
- AO. TRAIL HEAD
- AP. SCULPTURE GARDEN/SPECIAL NEEDS PLAY AREA
- AQ. ATHLETIC COURTS/FIELDS
- AR. RELOCATED MAINTENANCE FACILITY
- AS. FUTURE TRANSIT LINE
- AT. PLAYGROUND/PICNIC AREA
- AU. KAYAK RENTAL
- AV. MIXED-USE RETAIL
- AW. SCULLING BOAT HOUSE

- VEHICULAR CIRCULATION
- MAIN LOOP TRAIL
- MULTI-USE TRAILS



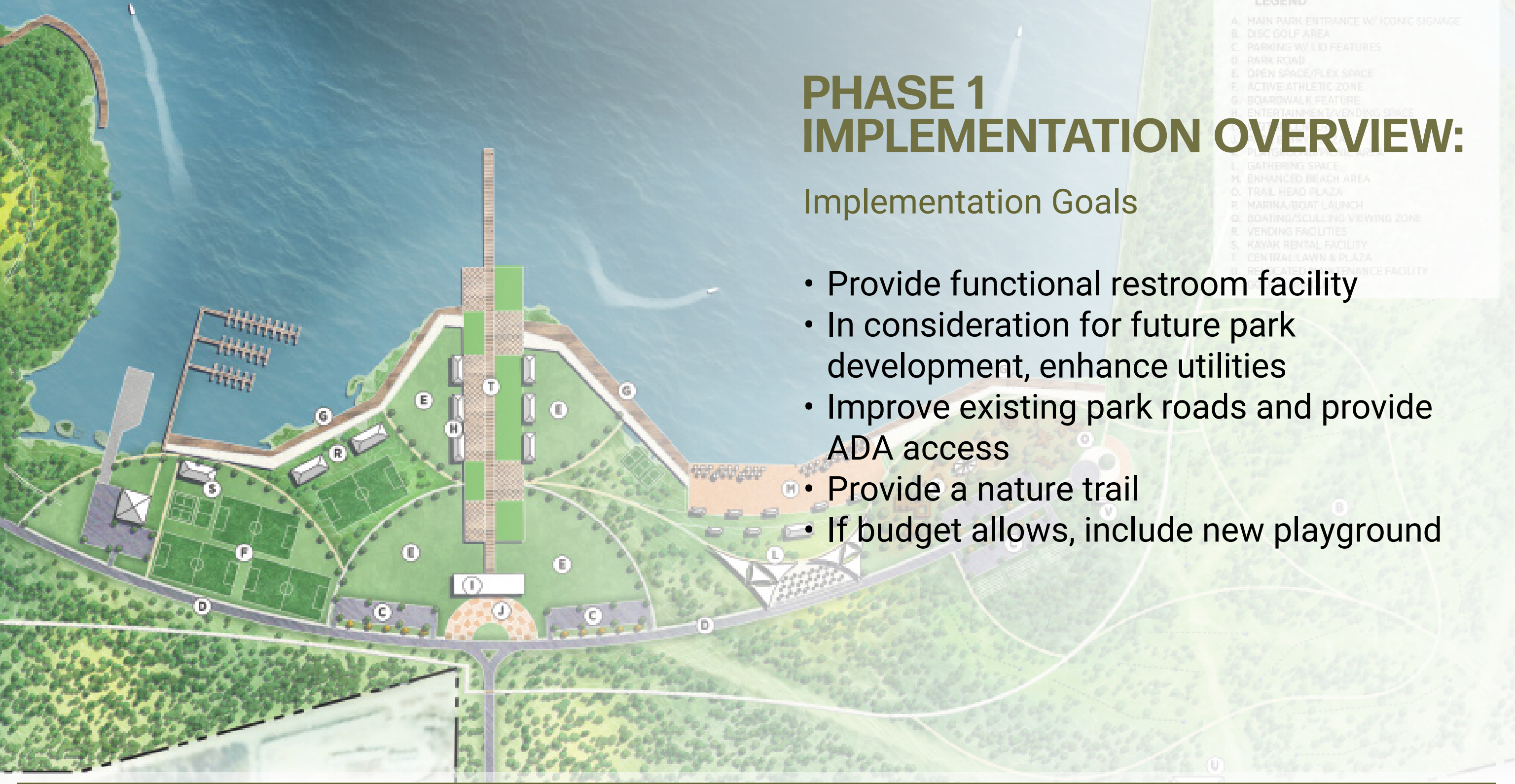
Focus area for Phase 1 Implementation

PHASE 1 IMPLEMENTATION OVERVIEW:

Implementation Goals

- Provide functional restroom facility
- In consideration for future park development, enhance utilities
- Improve existing park roads and provide ADA access
- Provide a nature trail
- If budget allows, include new playground

- LEGEND
- A. MAIN PARK ENTRANCE W/ ICONIC SIGNAGE
 - B. DISC GOLF AREA
 - C. PARKING W/ LID FEATURES
 - D. PARK ROAD
 - E. OPEN SPACE/PLEX SPACE
 - F. ACTIVE ATHLETIC ZONE
 - G. BOARDWALK FEATURE
 - H. ENTERTAINMENT/VENDING SPACE
 - I. PLAYGROUND
 - J. PLAYGROUND
 - K. PLAYGROUND
 - L. GATHERING SPACE
 - M. ENHANCED BEACH AREA
 - N. TRAIL HEAD PLAZA
 - O. MARINA/BOAT LAUNCH
 - P. BOATING/SCULLING VIEWING ZONE
 - Q. VENDING FACILITIES
 - R. KAYAK RENTAL FACILITY
 - S. CENTRAL LAWN & PLAZA
 - T. RECYCLED MAINTENANCE FACILITY
 - U. RECYCLED MAINTENANCE FACILITY
 - V. RECYCLED MAINTENANCE FACILITY



PHASE 1 IMPLEMENTATION OVERVIEW:

Preliminary Phase :	January - May 2023
Design Phase :	June 2023 - January 2024
Design Development and Construction Documents:	Early 2024 - Early 2025
Permitting:	Mid 2024 - Mid 2025
Construction Start:	Late 2025

- A. MAIN PARK ENTRANCE W/ ICONIC SIGNAGE
- B. DISC GOLF AREA
- C. PARKING W/ LID FEATURES
- D. PARK ROAD
- E. OPEN SPACE/FLEX SPACE
- F. ACTIVE ATHLETIC ZONE
- G. BOARDWALK FEATURE
- H. ENTERTAINMENT/VENDING SPACE
- I. PLAYGROUND
- J. PLAYGROUND
- K. GATHERING SPACE
- L. ENHANCED BEACH AREA
- O. TRAIL HEAD PLAZA
- P. MARINA/BOAT LAUNCH
- Q. BOATING/SCULLING VIEWING ZONE
- R. VENDING FACILITIES
- S. KITCHEN
- T. RELOCATED MAINTENANCE FACILITY
- U. GOLF CLUBHOUSE



PROJECT FUNDING

- Current Funding Available For Construction Is \$3.7 Million
- Improvements as presented exceeds available funding
- Community can assist in identifying and prioritizing improvements
- PARD is investigating additional funding opportunities such as matching grants from the Texas Parks and Wildlife Dept.
- Paving and utility improvements alone are estimated to take 80% of available construction budget



ANTICIPATED PARK ELEMENTS

- Improve access and parking, including accessible parking, for existing and proposed park elements
- Improve existing restroom facilities and utilities
- Improve existing park roads
- Improve select picnic areas and add drinking fountains
- Nature trail

PLEASE TELL US HOW YOU WOULD PRIORITIZE POTENTIAL PARK UPGRADES

- Upgrade existing and provide new picnic facilities
- Character and place-making improvements (portable restroom enclosures, bollards, etc.)
- All inclusive playground
- Nature based playground
- Trees and landscape enhancements throughout





LEGEND
Existing Site Conditions

- Atlas 14 floodplain
- - 150ft Setback
- Mostly Flat
- ↗ Slope Direction

SITE ANALYSIS - EXISTING CONDITIONS

Walter E Long Metropolitan Park



LEGEND

Riparian Area Rating

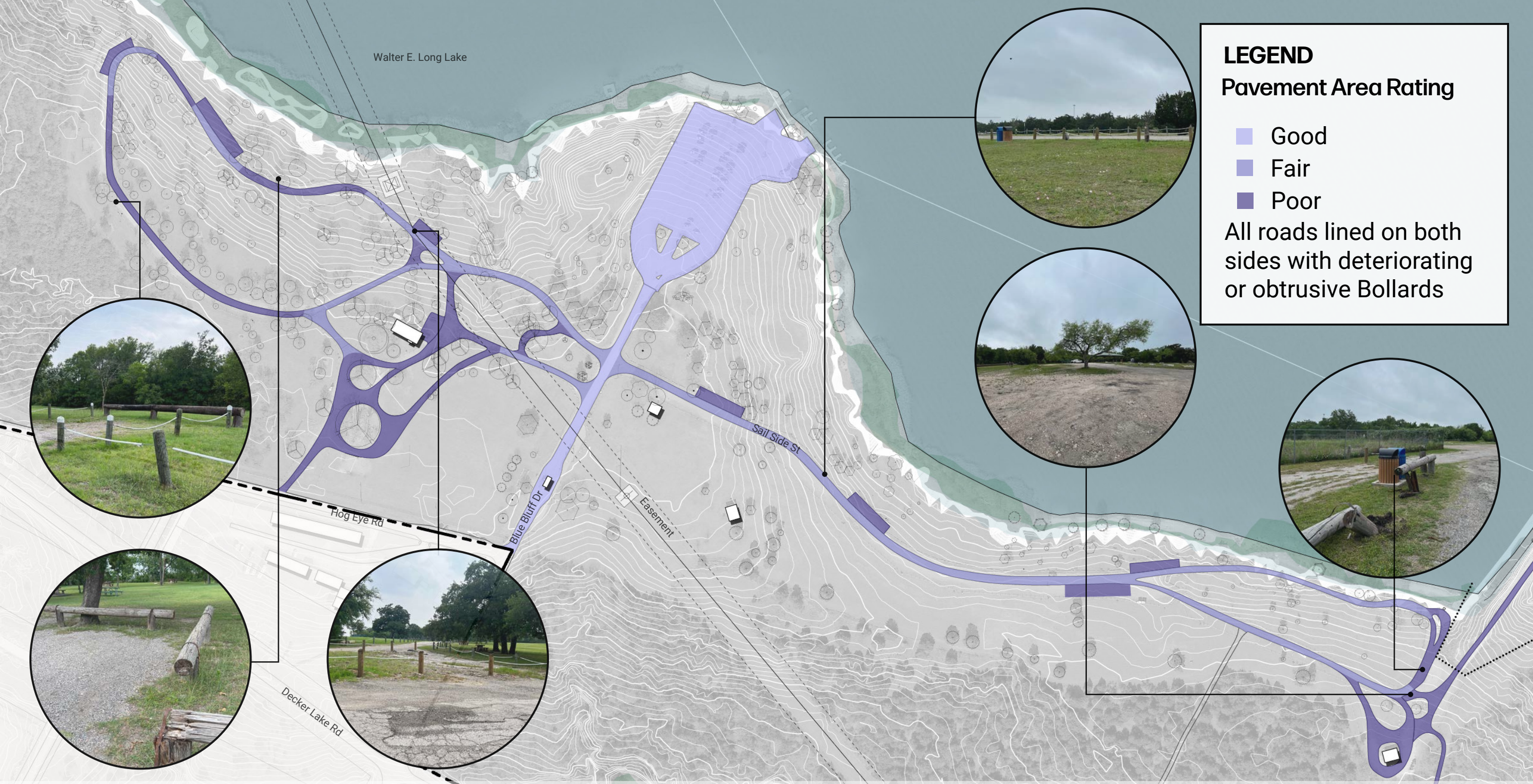
- Good
- Fair

Tree Rating

- Outstanding
- Good
- Fair
- Poor

Other Vegetation

- Mostly Flat Lawn
- Forested Area



LEGEND

Pavement Area Rating

- Good
- Fair
- Poor

All roads lined on both sides with deteriorating or obtrusive Bollards

SITE ANALYSIS - EXISTING PARKING

Walter E Long Metropolitan Park

11-15-2023










page

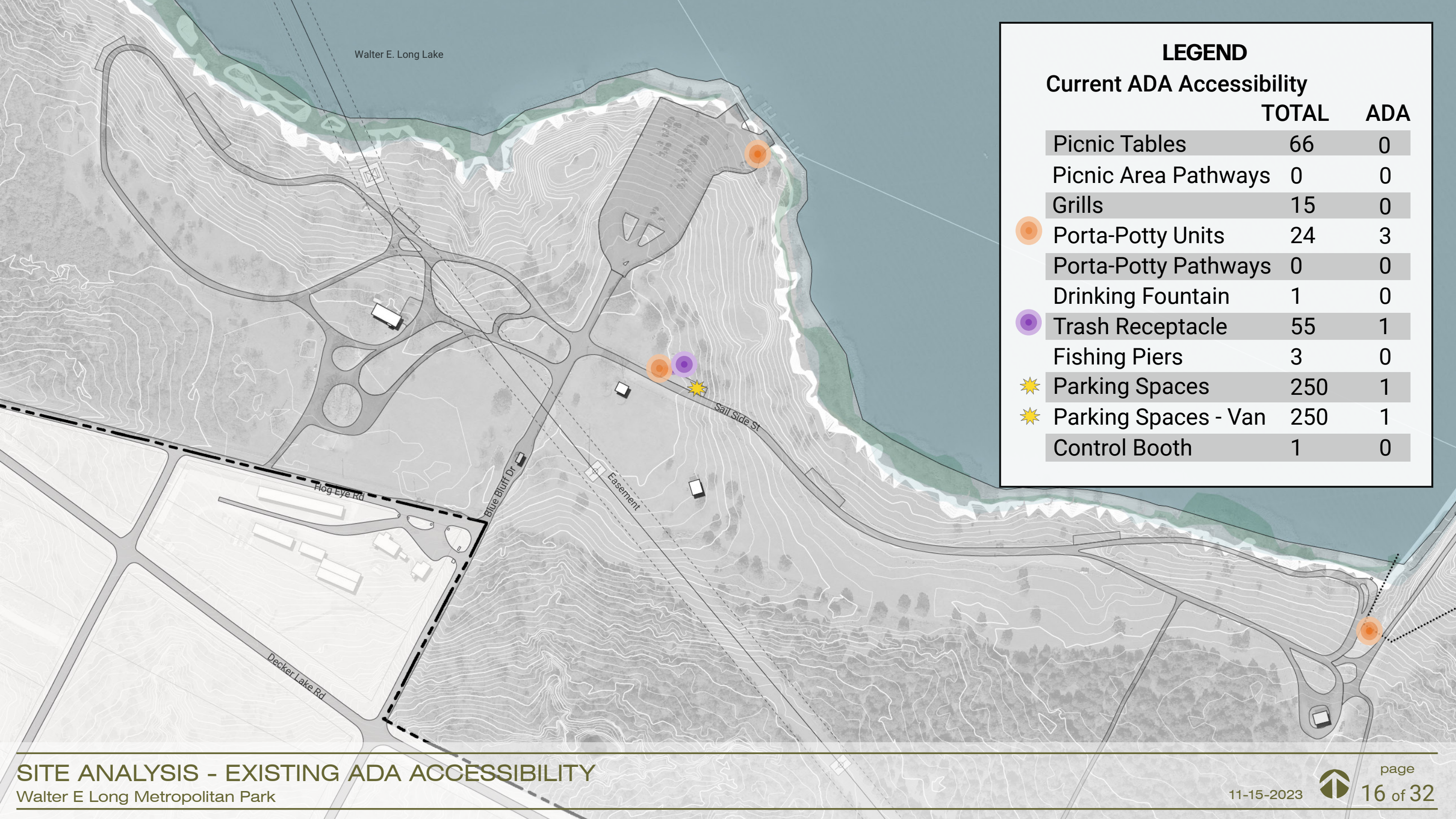
14 of 32



LEGEND





Existing Site Furniture

-  Movable Picnic Tables
-  Permanent Picnic Tables
-  Grills
-  Pavilion
-  Control Booth
-  Portable Toilets
-  Existing Restroom Facility - non functioning



LEGEND

Current ADA Accessibility

	TOTAL	ADA
Picnic Tables	66	0
Picnic Area Pathways	0	0
Grills	15	0
 Porta-Potty Units	24	3
Porta-Potty Pathways	0	0
Drinking Fountain	1	0
 Trash Receptacle	55	1
Fishing Piers	3	0
 Parking Spaces	250	1
 Parking Spaces - Van	250	1
Control Booth	1	0



Walter E. Long Lake

Hog Eye Rd

Decker Lake Rd

Trail Side St

Easement





LEGEND

- Pavement proposed to keep
- Pavement proposed to be removed



Future Marina

Future Central Lawn and Plaza

LEGEND

- Future Road
- - Future Athletic Facilities
- ▨ Future Central Lawn & Plaza
- ▨ Future Marina

Walter E. Long Lake

Future Ball Courts

Future Soccer Fields

Future Road



Hog Eye Rd

Decker Lake Rd

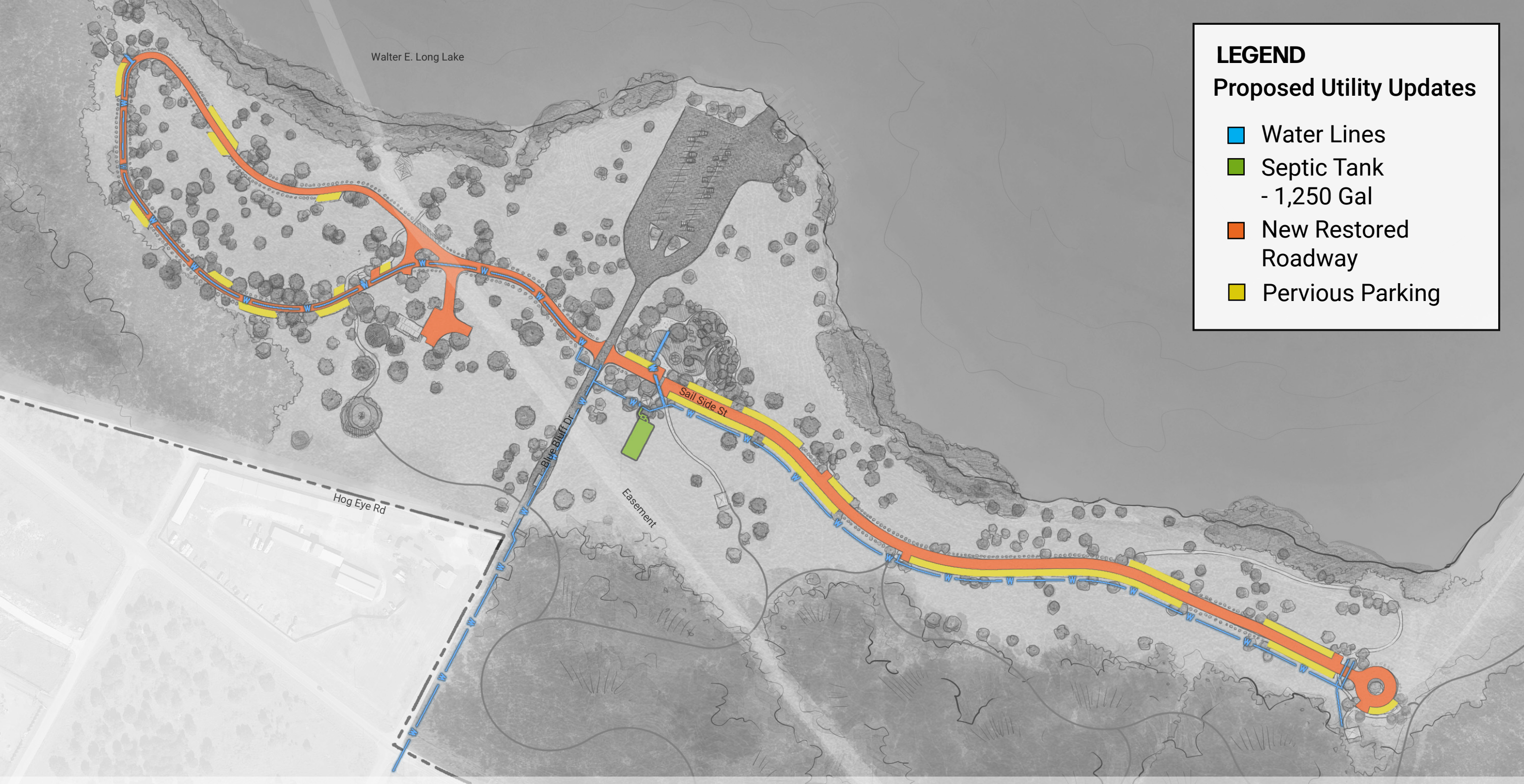
Easement

Sail Side St

Walter E. Long Lake


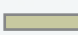
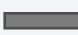


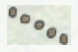



LEGEND
Proposed Utility Updates

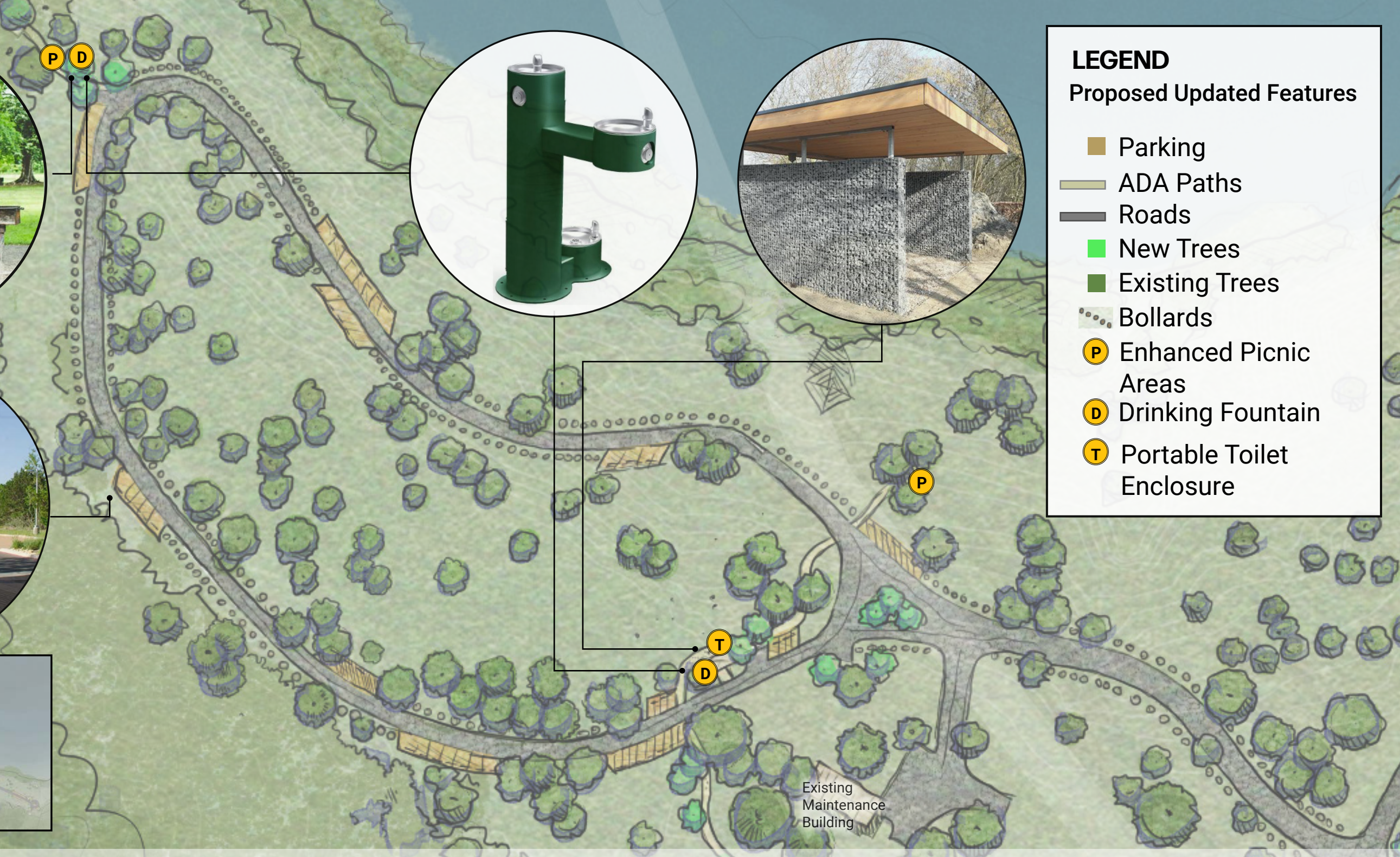
- Water Lines
- Septic Tank
- 1,250 Gal
- New Restored
Roadway
- Pervious Parking

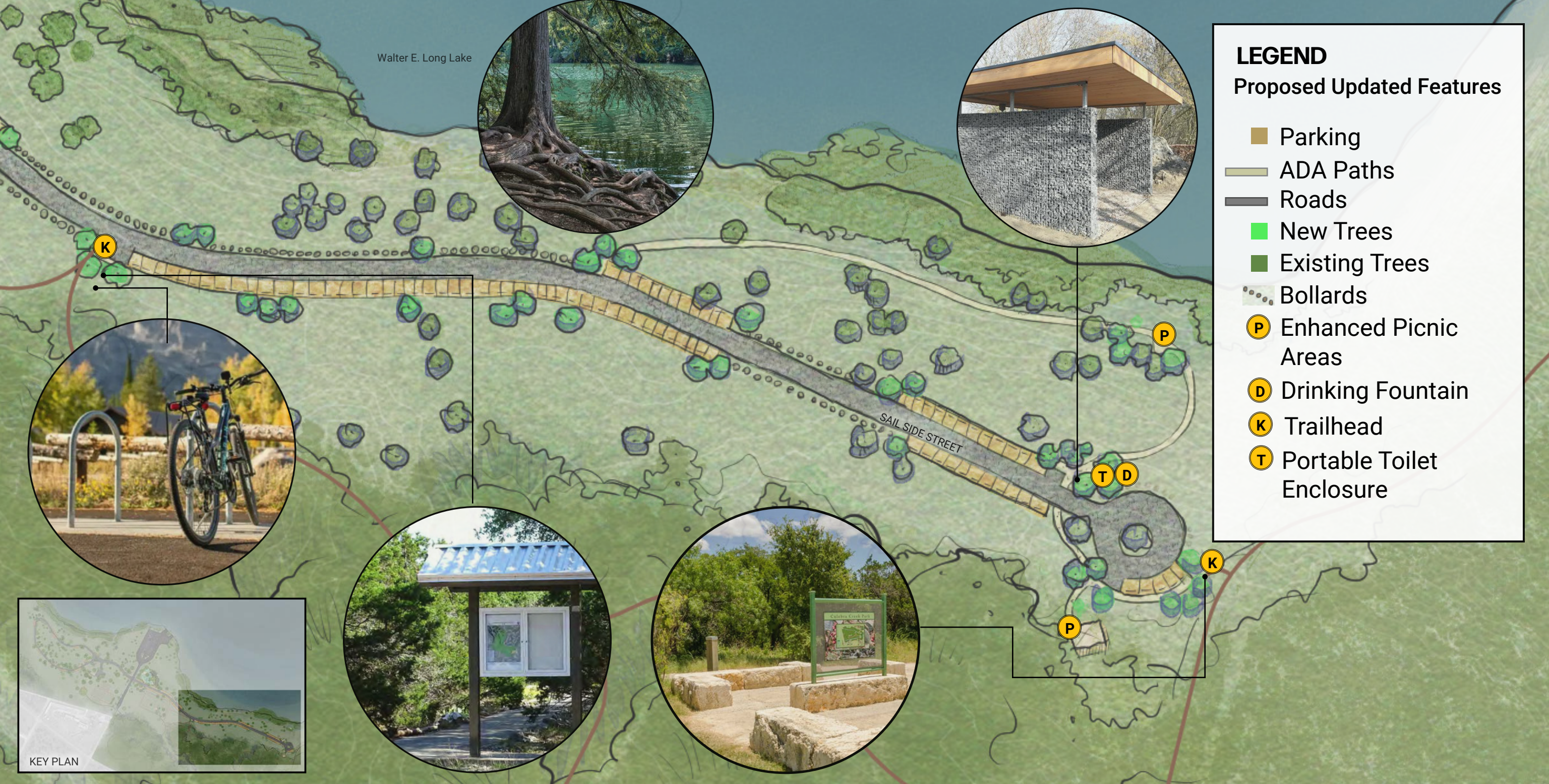


LEGEND

Proposed Updated Features

-  Parking
-  ADA Paths
-  Roads
-  New Trees
-  Existing Trees
-  Bollards
-  Enhanced Picnic Areas
-  Drinking Fountain
-  Portable Toilet Enclosure





Walter E. Long Lake

LEGEND

Proposed Updated Features


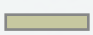
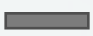


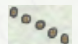





- Parking
- ADA Paths
- Roads
- New Trees
- Existing Trees
- Bollards
- Enhanced Picnic Areas
- Drinking Fountain
- Trailhead
- Portable Toilet Enclosure





LEGEND

Proposed Updated Features









-  Parking
-  ADA Paths
-  Roads
-  New Trees
-  Existing Trees
-  Bollards
-  Enhanced Picnic Areas
-  Drinking Fountain
-  Playground
-  Bathroom Building
-  Control Booth



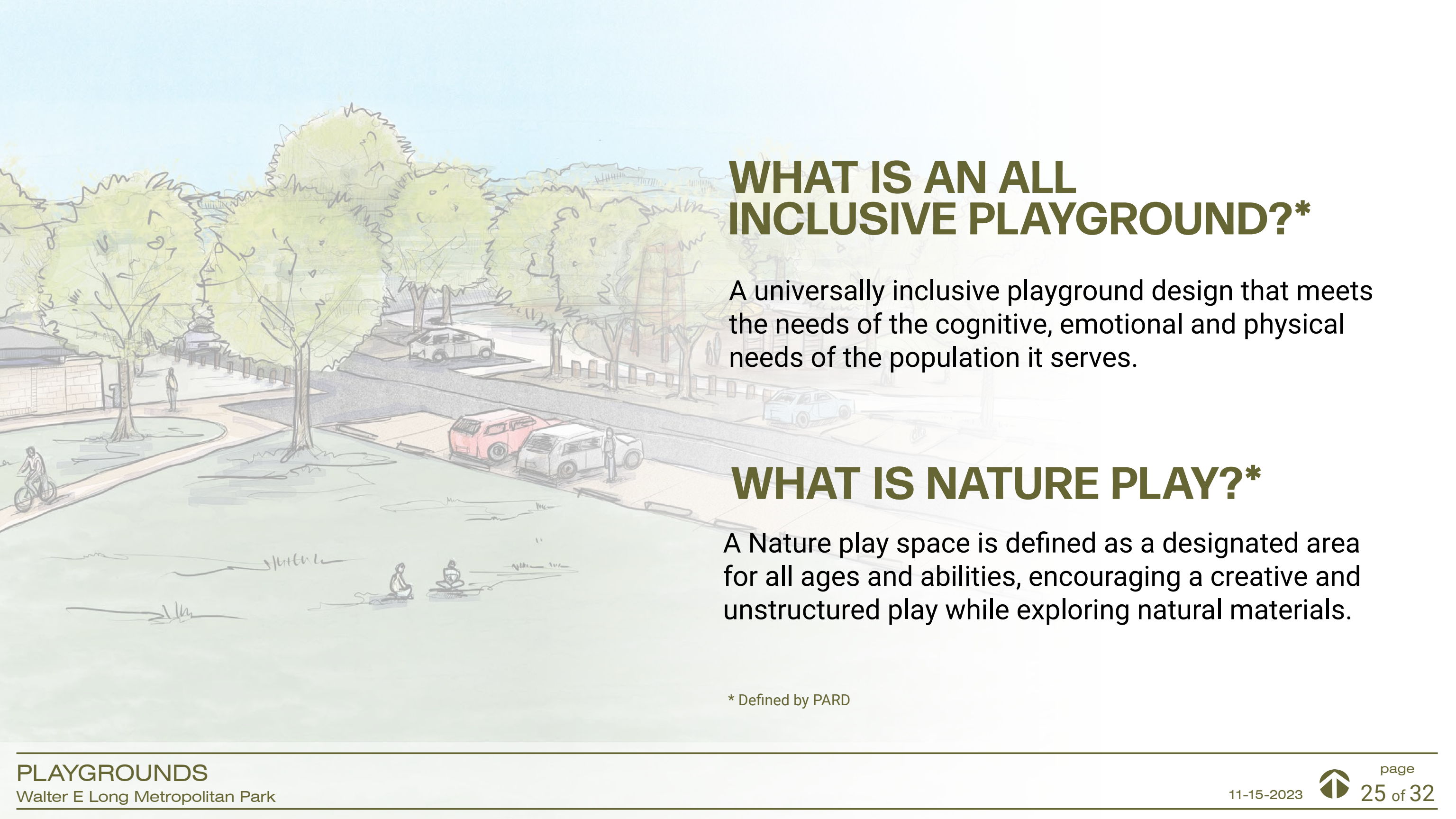


LEGEND

Proposed Updated ADA Features

-  ADA Parking - 29
-  ADA Paths - .63 Miles
-  ADA Bathrooms - 3
-  ADA Picnic Areas with Grills - 7
-  Proposed All Inclusive Playground - 1
-  ADA Control Booth with Restroom - 1
-  ADA Drinking Fountains - 5
-  ADA Trash Receptacles - 9





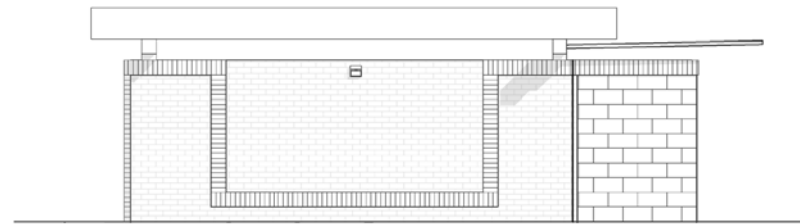
WHAT IS AN ALL INCLUSIVE PLAYGROUND?*

A universally inclusive playground design that meets the needs of the cognitive, emotional and physical needs of the population it serves.

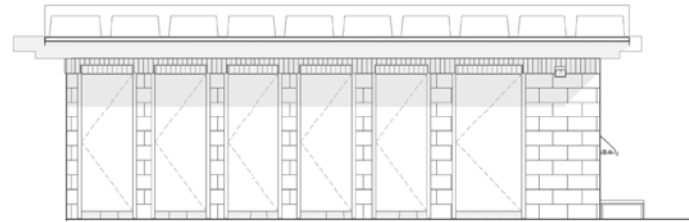
WHAT IS NATURE PLAY?*

A Nature play space is defined as a designated area for all ages and abilities, encouraging a creative and unstructured play while exploring natural materials.

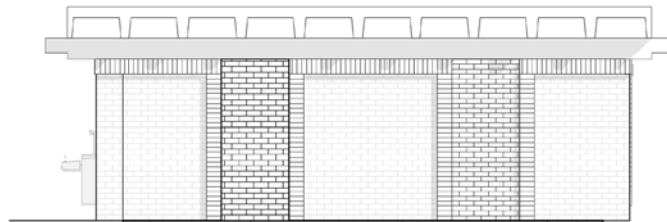
* Defined by PARD



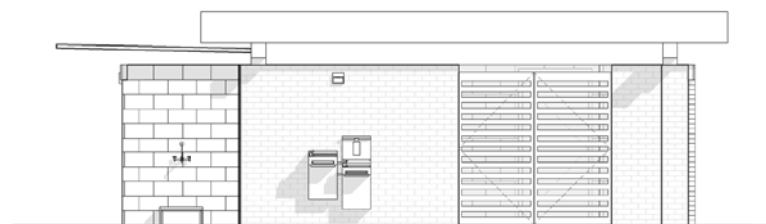
RESTROOM PLAN SOUTH



RESTROOM PLAN EAST

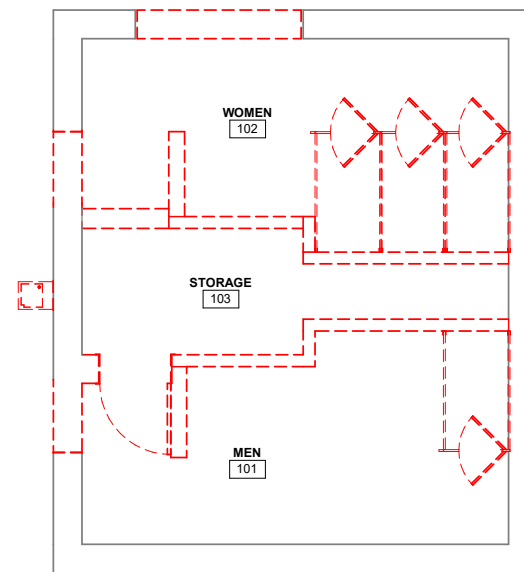


RESTROOM PLAN WEST

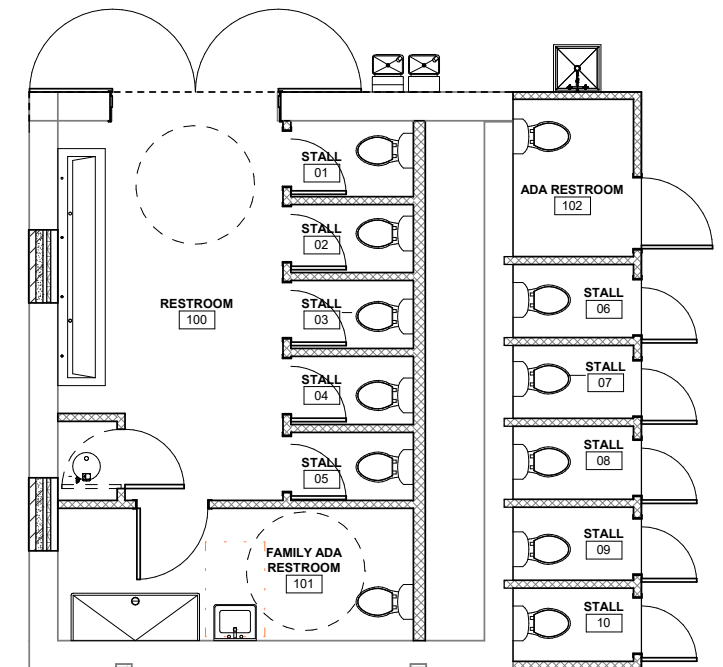


RESTROOM PLAN WEST

- EXISTING ROOF & BRICK WALLS TO REMAIN
- NEW METAL ENTRY GATES
- NEW WATER FOUNTAIN
- PROPOSED ADDITION
- NEW FOOT WASHING STATION



DEMO FLOOR PLAN



RESTROOM FLOOR PLAN



BIRDS EYE RENDER - LOOKING EAST

Walter E Long Metropolitan Park



BIRDS EYE RENDER - LOOKING NORTH WEST
Walter E Long Metropolitan Park

PLEASE TELL US HOW YOU WOULD PRIORITIZE POTENTIAL PARK UPGRADES

- Upgrade existing and provide new picnic facilities
- Character and place-making improvements (portable restroom enclosures, bollards, etc.)
- All inclusive playground
- Nature based playground
- Trees and landscape enhancements throughout



NEXT STEPS:

- Refine implementation design based on community priorities and budget availability
- Begin design development
- Find most up to date information on the Walter E. Long Metropolitan Park Improvements Here:



<https://www.austintexas.gov/walter-e-long-park-improvements>





COMMENTS OR QUESTIONS?



**THANK YOU FOR YOUR PARTICIPATION!
YOUR VOICE MATTERS.**



CIVILITUDE
ENGINEERS & PLANNERS

