



## Little Walnut Creek Greenbelt Trailhead Project Phase 1

### Summary Report of Community Meeting

October 21, 2020

Little Walnut Creek Greenbelt is an undeveloped park in East Austin that is undergoing major improvements. Austin Parks Foundation is partnering with the City of Austin Parks and Recreation Department (PARC) to develop a trailhead, improve existing trails, and implement other priority projects desired from the community. The first step taken in the development of this project is to introduce the initial phase of the plan - the development of a formal trailhead - so that community members may share their feedback on the project. APF can then use the online survey input to gain a better understanding of the needs of the park and the community members that use it for the next steps of the trailhead development.

The information presented at the meeting included the community vision plan, design service, site photos, trailhead and trail construction, preliminary design plans, park design features, schedule that includes next steps, and an opportunity to access the online survey and future virtual community meetings.

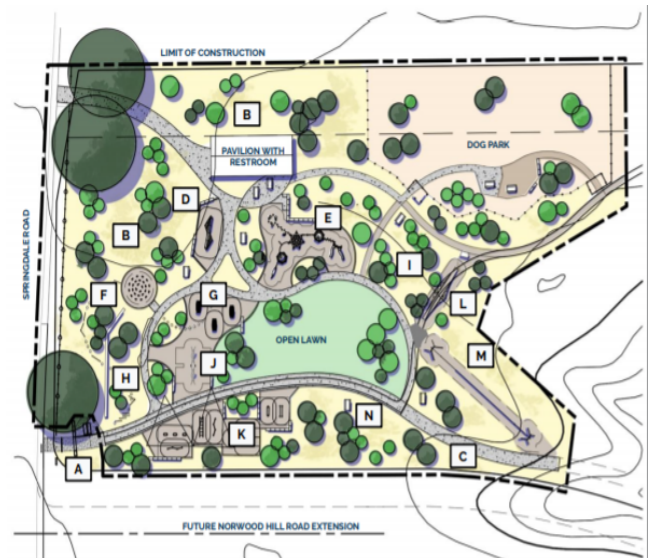
### Park Design Features

These features include:

- Shared use path
- Connection walk
- Nature trail
- Outdoor classrooms
- Maintained lawn
- Restoration zone
- Adult fitness area
- Fitness and Adventure Elements
  - “Bamboo” Challenge Course
  - Climbing Boulder
- Children’s Adventure Play Elements
  - Basket Swings
  - Net Climbers
  - “Hill” Climbers
- Exploration Play Elements
  - Small Suspension Bridge
  - Cable Zip Line
- Nature Play Elements

### Preliminary Design Plan Little Walnut Creek Greenbelt Phase 1

LEGEND	
A.	TRAILHEAD
B.	UNDISTURBED AREA
C.	CONCRETE TRAIL
D.	CLIMBING BOULDER
E.	NET CLIMBER
F.	CHALLENGE COURSE
G.	HILL CLIMBER
H.	NATURE PLAY
I.	DRY CREEK
J.	SWINGS
K.	ADULT FITNESS AREA
L.	SUSPENSION BRIDGE
M.	ZIP LINE
N.	PICNIC TABLE



- Off leash dog area

### **Activity: Online Survey**

After the meetings, community members had the opportunity to participate in an online survey requesting their feedback and opinions on the information provided to them. Individuals had the chance to provide additional feedback regarding park needs, concerns, and ideas for park improvements. In total 98 responses were collected.

### **Online Survey Results**

Based on community responses, the majority of individuals use Little Walnut Creek Greenbelt to walk, hike, bike, and run. Responders also use the park to walk their dogs, exercise, and enjoy nature with 47.3% of responders using the space a few times a year and 15.4% once a week. The majority of responses called for the improvement of trails and access to Greenbelt, develop parking, and provide more trash and recycling bins.

When asked about which area of the playground the community would like to see developed first, the top 3 choices are:

1. Trash and recycling bins (43.2%)
2. Pavilion with restroom (38.9%)
3. Off leash dog area (36.8%)

When asked for additional thoughts about improving the park as a whole, the following ideas were suggested:

- Accessible trailheads
  - Developed trails
  - Bike trails
- Parking
- Nature play elements
- Fitness area
- Bike racks
- Sidewalks
- Dog poop bags
- Trashcans