



Ridgeline Neighborhood Park Project

Image of a trail at Ridgeline Park

Virtual Community Meeting #1

January 6, 2022, 5:30 p.m.
Meeting is being recorded



Virtual Meeting Info: Zoom Housekeeping



Participants can join by computer and/or phone: Meeting ID 872 4551 3978



This session is being recorded and will be posted at the conclusion.



Participants will stay muted through presentation.



Comments and questions can be shared throughout the meeting in the chat.



We will have open Q&A time at the end.



“Raise hand” for sharing comments during Q&A session.

Agenda

- Project Team
- Park Location & History of the Park
- Existing Conditions
- Pause for Clarifying Questions
- Park Types and Long Range Priorities
- Environmental Constraints and Design Considerations
- Project Timeline
- Guided Q&A on PollEverywhere.com
- Next Steps
- Questions and Comments

[PollEv.com/austinparks512](https://pollev.com/austinparks512), or
Text **AUSTINPARKS512** to **22333** to join

Introductions: Meet the Team



Bobby Zaidi (he/him), PARD Community Services Coordinator



Justin Schneider (he/him), PARD Community Engagement Specialist



James Wheeler (he/him), PARD Parks Development, Project Coordinator and Project Contact

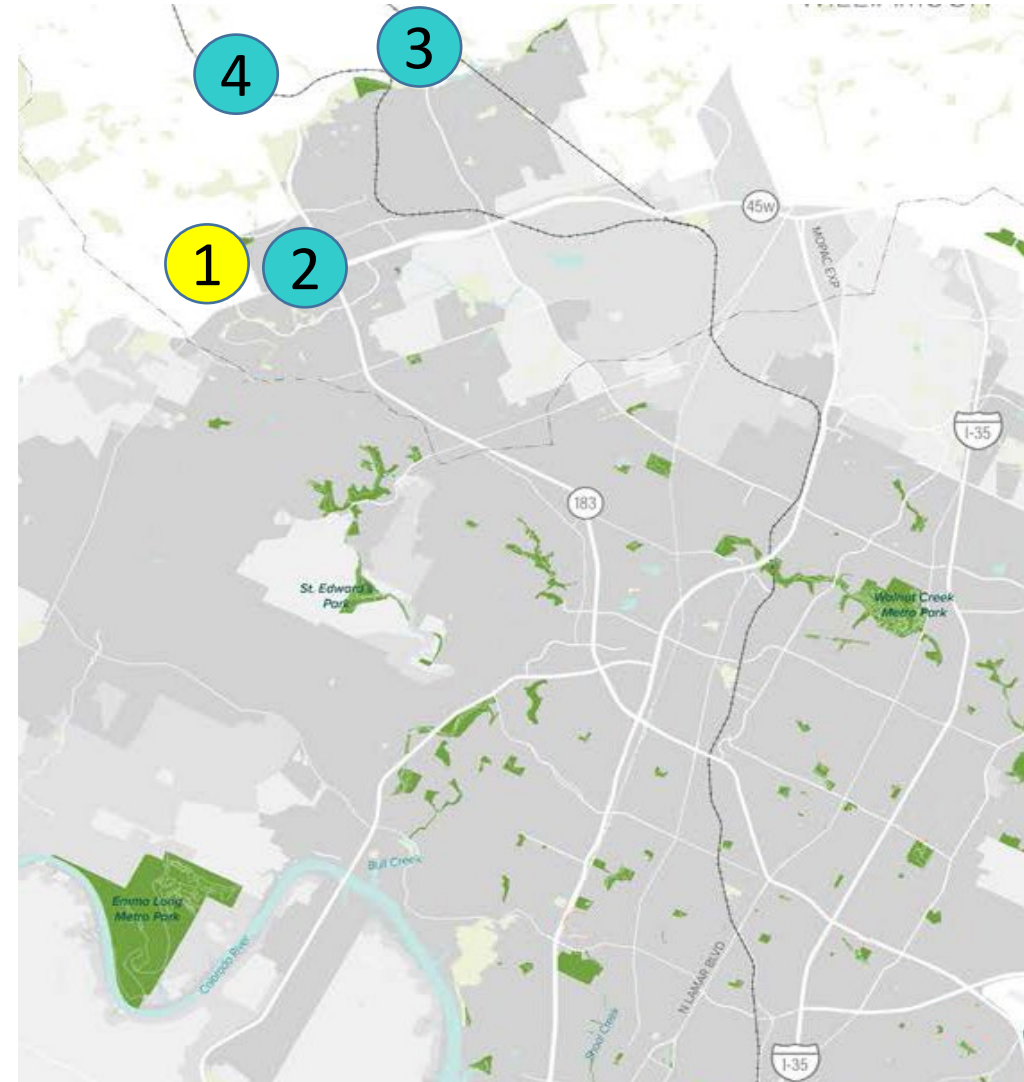
James.Wheeler@austintexas.gov



Project information available at <https://austintexas.gov/RidgelinePark>

Project Location and Landmarks

- 1 Ridgeline Neighborhood Park – City of Austin
- 2 Lakeline Mall
- 3 Brushy Creek Sports Park - Cedar Park
- 4 Cedar Park City Hall



Project Location and Landmarks

- ① Ridgeline Neighborhood Park
- ② Austin Community College Campus
- ③ Cedar Park Middle School
- ④ Milburn Park and Pool (Cedar Park)
- ⑤ Cedar Park Youth Ball Fields
- ⑥ Lakeline Regional Park (Cedar Park)







History of the Parkland

- Ridgeline Neighborhood Park is a City of Austin park, located in Williamson County, near Cedar Park city limits
- 10.45-acre park
- Acquired by the City of Austin in 1987 as part of parkland dedication.
- Previously named Lakeline Neighborhood Park, recently changed to reduce confusion with similar named places.
- Designated as a Neighborhood Park, due to size and adjacency to residential housing



Existing Conditions 1

- Existing drainage channel 
- Existing foot path 
- Existing wetland with 50' buffer 
- (PUE) Public Utility Easement or Drainage Easement 

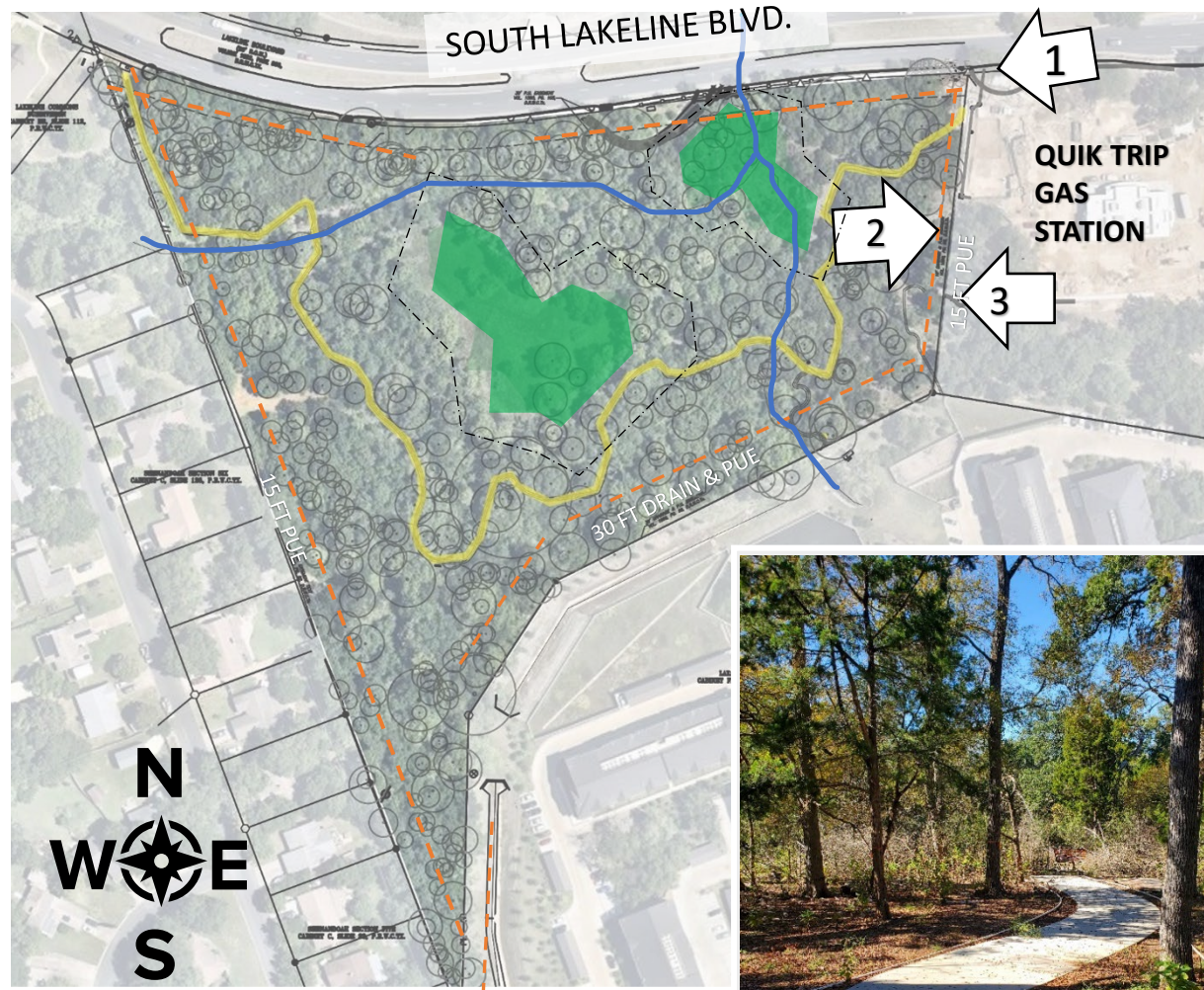


PHOTO 1 Sidewalk at corner of park. Sidewalk ends behind tree



PHOTO 3 Public/private sidewalk facing the park

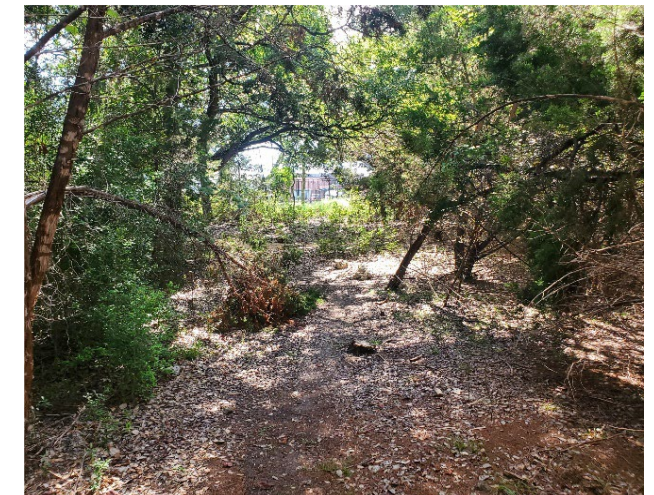





PHOTO 2 View looking east from parkland property line

Existing Conditions 2

- Existing drainage channel 
- Existing foot path 
- Existing wetland with 50' buffer 

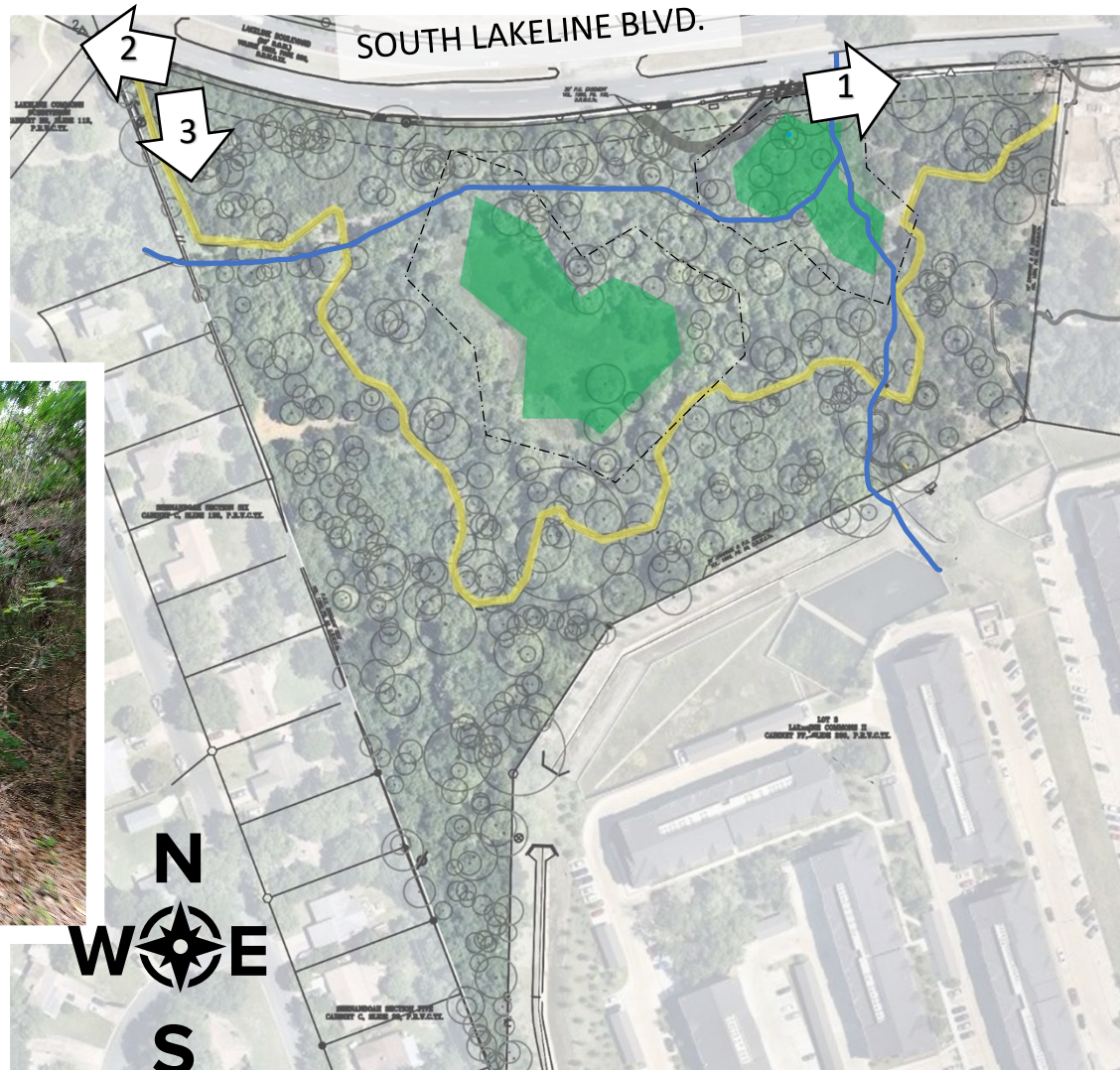


PHOTO 3 Exiting Trail Access at Street



PHOTO 1 Street Facing East



PHOTO 2 Street Facing West

Existing Conditions 3




- Existing drainage channel 
- Existing foot path 
- Existing wetland with 50' buffer 



PHOTO 3 Upland Trail & Trees



PHOTO 1 Existing Unnamed Drainage Channel



PHOTO 2 Existing Wetland

Pause for Q&A from Chat

- 2 minutes to address questions for clarification
- Additional questions or comments that we don't get to now can be asked at the end of meeting or by emailing the project contact.



Existing Ridgeline Park trail, Summer 2021

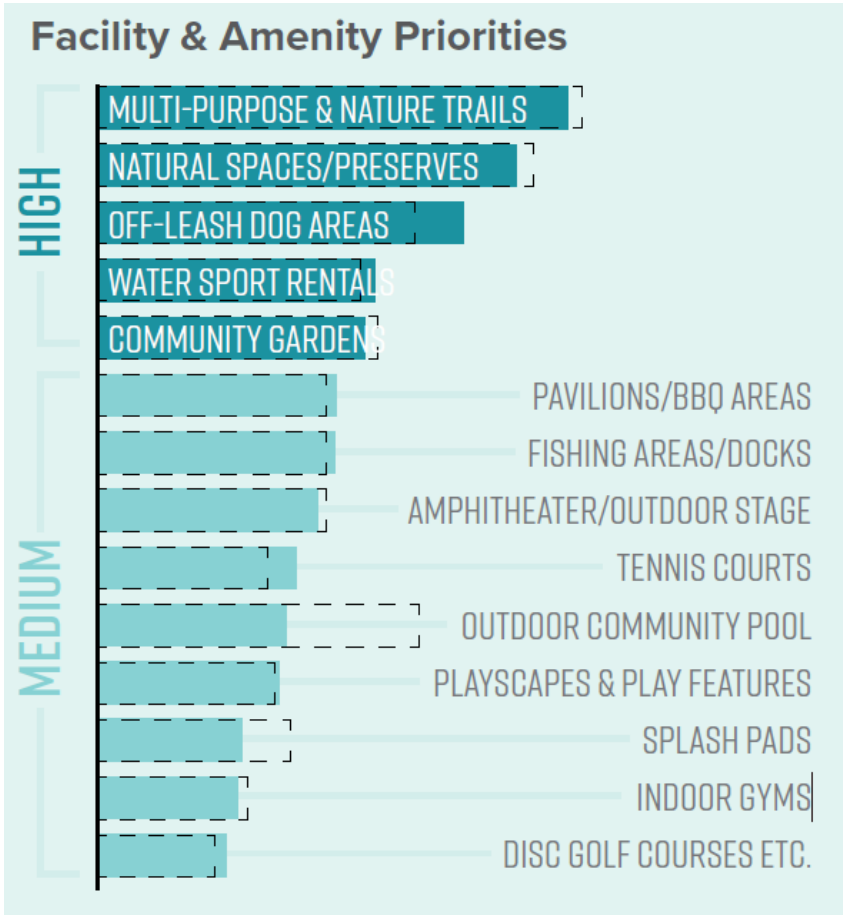
Park Types: Ridgeline "Neighborhood" Park

Classification	Size (acres)	Service Area	Access	Description	Features Mix
Metropolitan	201+	Citywide		Typically located in the center of a single neighborhood or in conjunctions with an elementary school or a greenbelt. Local recreation focus.	Compact Outdoor Athletics (if space is available), Trails, Picnic Areas, Gardens, Playscapes, Nature Play, Passive User Recreation
District	31-200	2 miles			
Neighborhood	2-30	½ to 1 mile (15-20 minute walk)	Collector streets (bike and pedestrian)		
Pocket	Under 2	1/4 mile			
Button	.25 or less	1/4 mile			

Additional Notes:

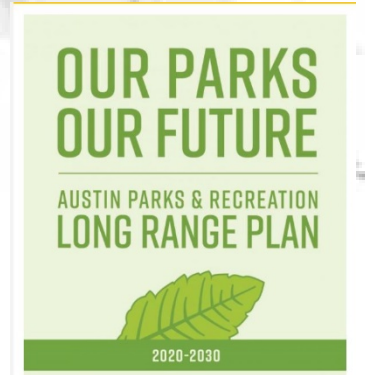
- Neighborhood parks do not typically include restrooms or parking lots.
- Due to site constraints and property access, a parking lot is not recommended for this project.

Our Parks, Our Future Long Range Plan North Area - Amenity Priorities








- Recommended program and amenities:
 - **Multi-Purpose & Nature Trails**
 - **Natural Spaces / Preserves**
- Other items like water sport rental, off leash areas and community gardens are unsuitable due to location, accessibility and potential environmental impacts to wetland areas.

Full PDF available at:
www.austintexas.gov/AustinFutureParks



Existing Vegetation and Constraints

- Existing drainage with 50' buffer 
- Existing Foot Path 
- Existing wetland with 50' buffer 
- Heritage Size Native Tree 24"+ 
- (PUE) Public Utility Easement or Drainage Easement 



Wetland Buffer Constraints

- City of Austin code requires a 150 foot wetland buffer. This can be reduced to 50 feet with an administrative variance and mitigation measures.

Drainage and Utility Easements

- Construction related to amenities is not allowed within drainage or utility easements. Exceptions are sidewalk access or special circumstances.

Tree Protection Measures

- Native trees 24 inch in caliper and greater are protected to reduce damage to the roots and trunk. 12 ft minimum distance recommended from sidewalks and heavy construction. This may impact location of amenities and walkways.

Design Considerations

- Existing drainage with 50' buffer 
- Existing Foot Path 
- Existing wetland with 50' buffer 
- Heritage Size Native Tree 24"+ 
- Current Park Access Points (size related to amount of use) 

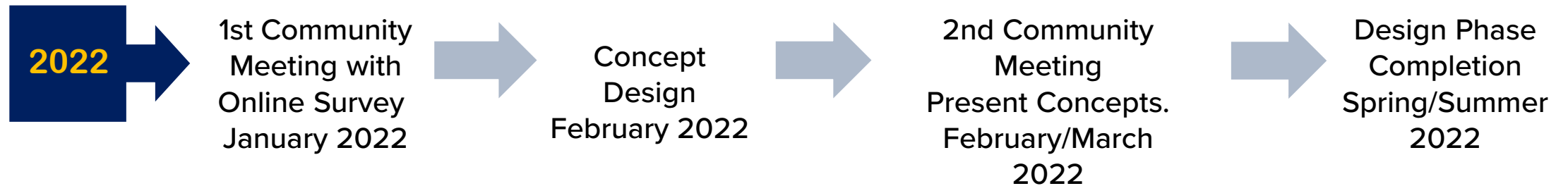


Design Consideration

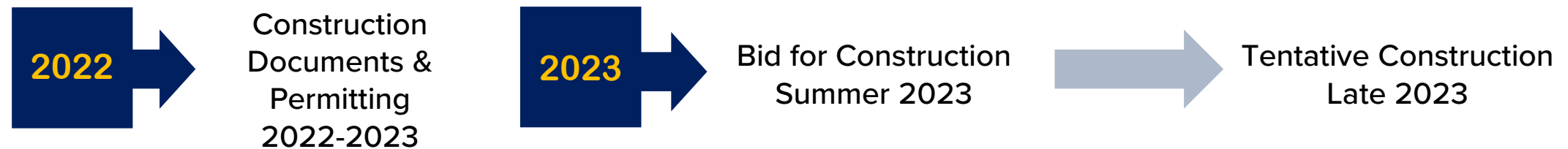
- City Austin code requires construction of a public sidewalk along S. Lakeline Blvd.
- Provide increased visibility to proposed amenities for safety and user comfort.
- Clear brush and trim/remove trees as needed for access and safety.
- All proposed park features should be ADA compliant and have an accessible route to and from a Public right of way.
- Additional amenities may be developed in future phases as funding becomes available.

Project Timeline

Planning and Design



Permitting and Construction



Anticipated Park Opening – 2024



Pause for Q&A from Chat

- 2 minutes to address questions for clarification
- Additional questions or comments that we don't get to now can be asked at the end of meeting or by emailing the project contact.



Existing Ridgeline Park trail, Summer 2021

Now we want to get some feedback

Pollev.com/austinparks512

or

Text AUSTINPARKS512 to 22333



Community Preference Exercise

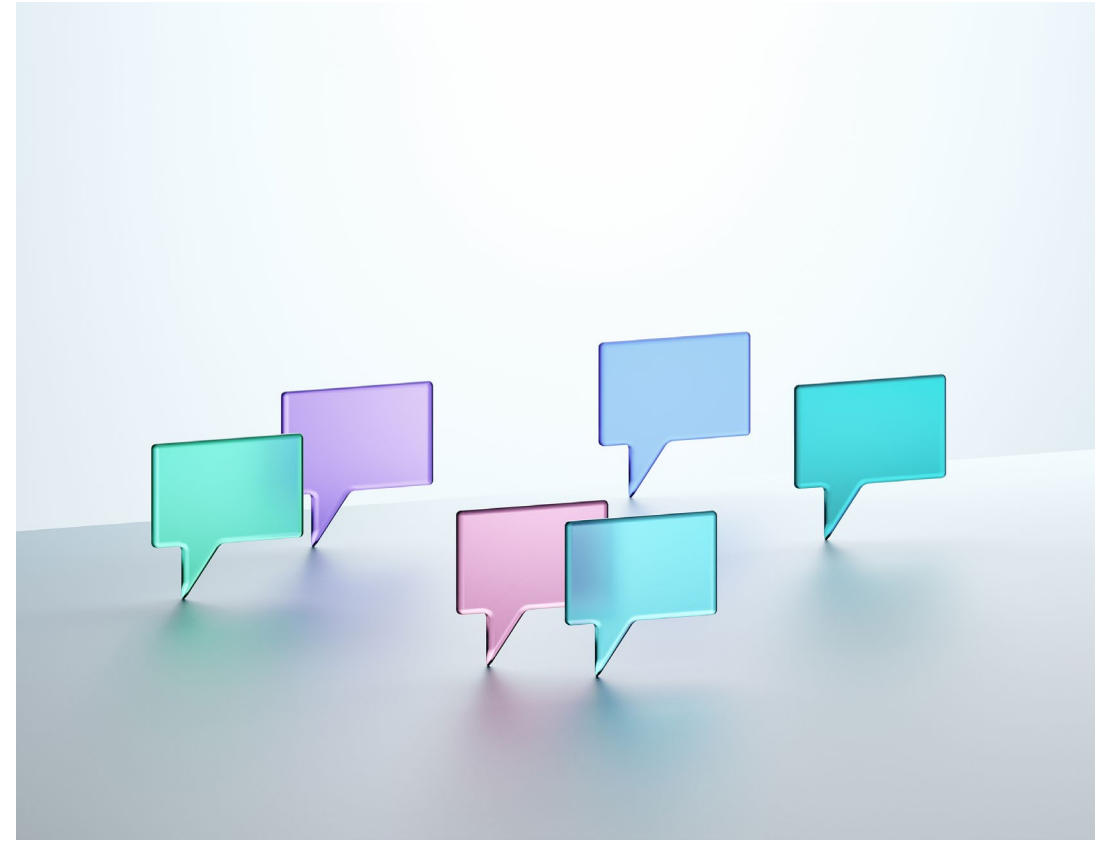
Introduction of Questions

- What word would you use to describe the community and neighborhood around Ridgeline Park?
- How close do you live to the park?
- Have you visited/walked by Ridgeline/Lakeline Park? (Yes/No)
- Which direction will you most likely enter park from? (A or B)
- What amenities do you prefer for Ridgeline Park? (select 3)
- What activities do you prefer for Ridgeline Park? (select 3)
- What other ideas for amenities or activities could we explore?



When Questions are activated, respond at [PollEv.com/austinparks512](https://www.poll-ev.com/austinparks512), or
Text **AUSTINPARKS512** to **22333** once to join

What word would you use to describe the community around Ridgeline Park?



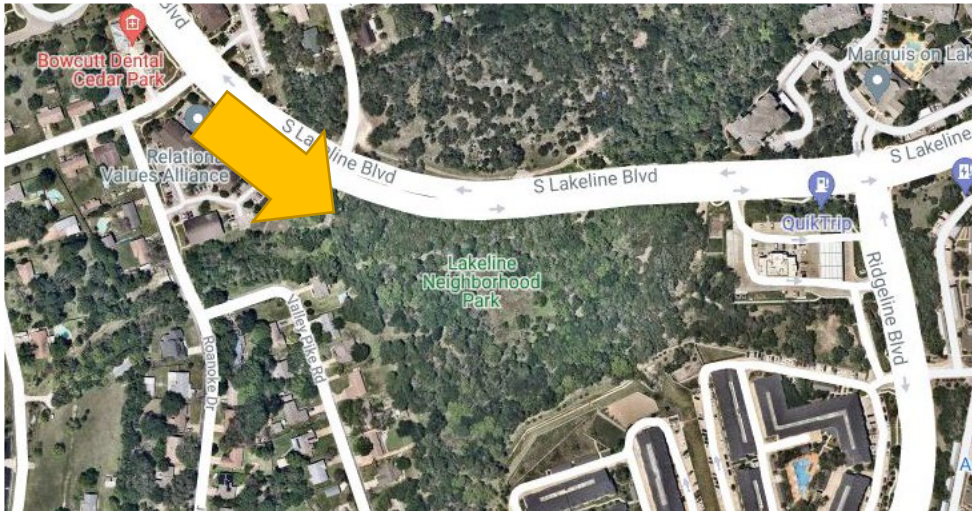
When Questions are activated, respond at [PollEv.com/austinparks512](https://www.poll-ev.com/austinparks512), or Text **AUSTINPARKS512** to **22333** once to join

Have you visited or walked by Ridgeline Park?



When Questions are activated, respond at [Pollevo.com/austinparks512](https://www.pollevo.com/austinparks512), or Text **AUSTINPARKS512** to **22333** once to join

Which direction will you most likely enter the park from?



A. Left / West



B. East / Right

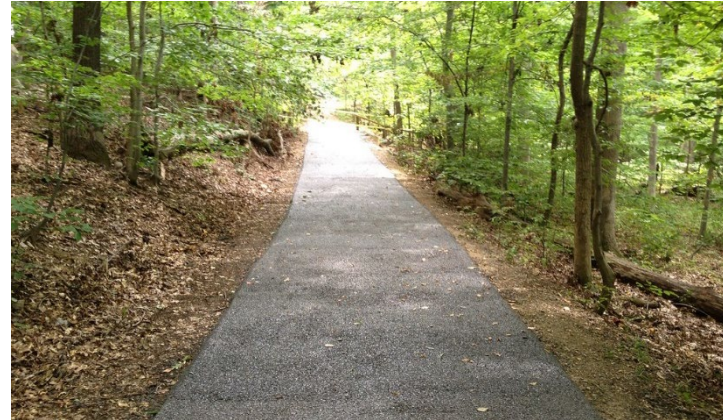


When Questions are activated, respond at [Pollevo.com/austinparks512](https://www.pollevo.com/austinparks512), or Text **AUSTINPARKS512** to **22333** once to join

Preferred Amenities



A. Covered Pavilion



B. Permanent Trail Improvements



C. Picnic Areas



D. Gathering and Entry Area



E. Play areas



F. Nature Preserve/Environmental Education



When Questions are activated, respond at [PollEv.com/austinparks512](https://www.poll-ev.com/austinparks512), or Text **AUSTINPARKS512** to **22333** once to join

Preferred Activity Types



A. Swing Sets



B. Traditional Playground



C. Ropes and Climbing Play



D. Group Work Out Equipment



E. Trail Workout / Circuit



F. Rock Climbing Wall

What other ideas for amenities or activities could we explore?



When Questions are activated, respond at [PollEv.com/austinparks512](https://www.poll-ev.com/austinparks512), or
Text **AUSTINPARKS512** to **22333** once to join

Next Steps

Share with others

- Can provide additional feedback and view a recording of tonight's meeting by visiting the Parks and Recreation Departments project webpage:

<https://www.austintexas.gov/RidgelinePark>

Community Survey

PublicInput.com/RidgelinePark (open now through January 31, 2022)

Community Meeting #2: Spring 2022





Questions & Comments

Project Contact
James Wheeler, PLA
james.wheeler@austintexas.gov

