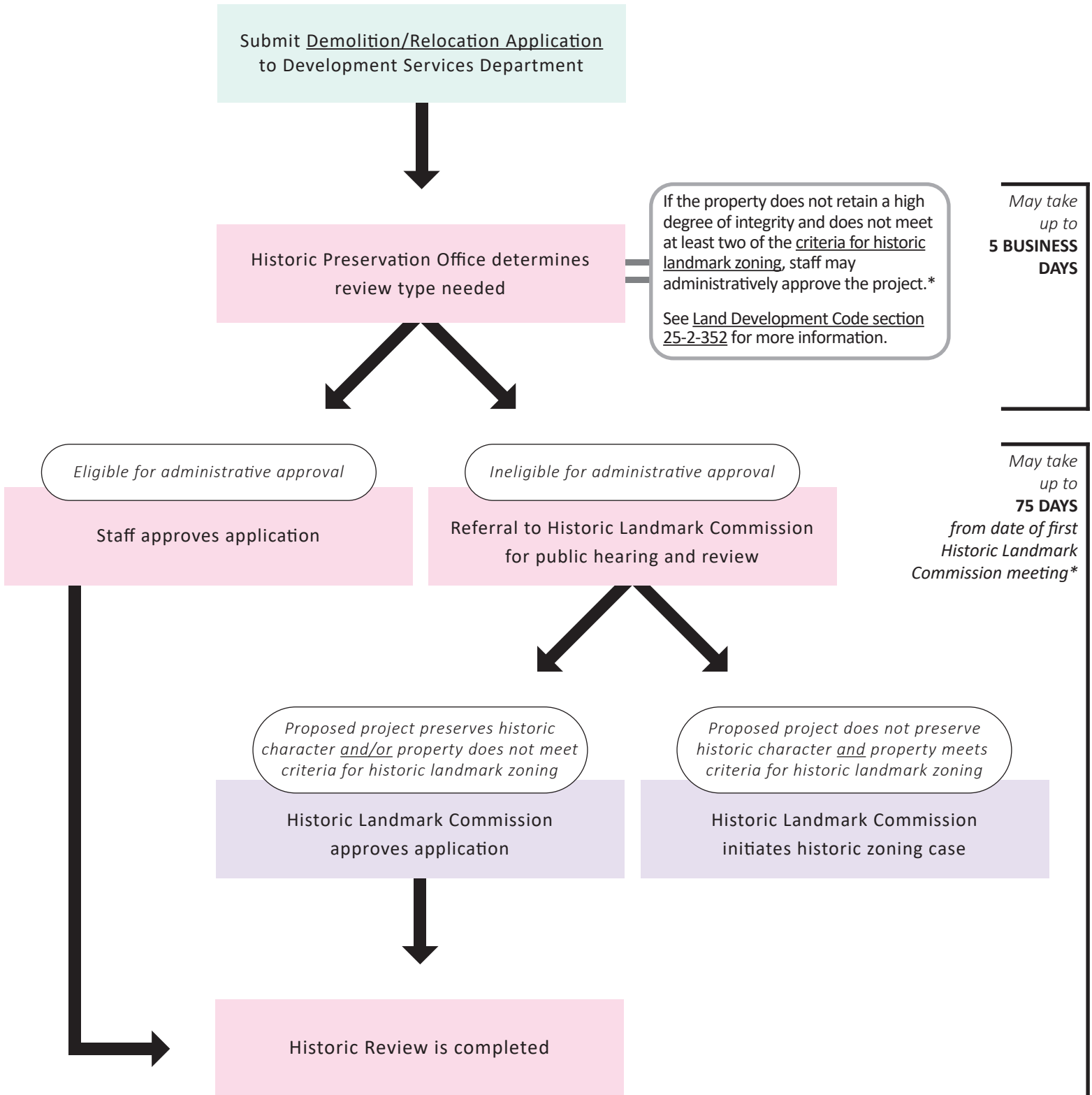




HISTORIC REVIEW PROCESS CHART


Demolition and Relocation Permit Applications


Buildings Over 45 Years Old



* Full demolition or relocation of a contributing building in a National Register historic district is *always* referred to the Historic Landmark Commission. Review may take up to 180 days from the receipt of a complete application.

[View submission deadlines here .](#)

Completed by applicant 

Completed by Historic Preservation Office 

Completed by Historic Landmark Commission 