

# ENVIRONMENTAL BMPs

FOR FIREWISE LANDSCAPING

Presented by:





# Pollution Prevention and Reduction

## Protecting Water Quality in Austin through:

- Emergency Spill Response
- Investigating Pollution Incidents
- Inspections for environmental compliance at commercial and industrial facilities.
- Manning Austin's 24/7 Pollution Hotline





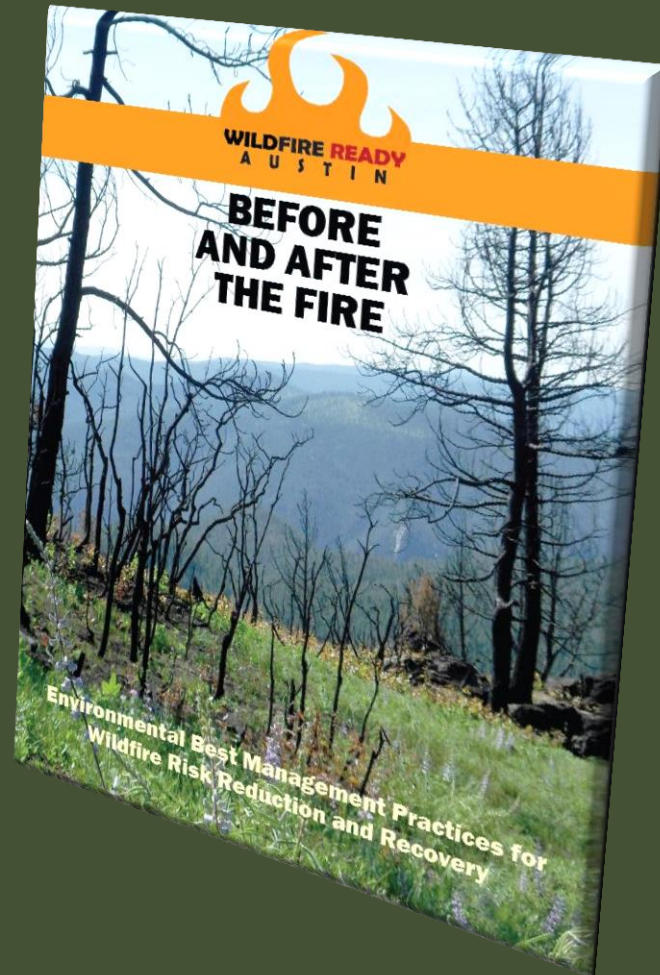
# How did Watershed Protection get involved?

- *Already had a close working relationship with AFD through spill response duties.*
- *Following the 2011 wildfires, the community turned to Watershed for environmental expertise.*



# Development of Environmental BMPs

[www.AustinTexas.gov/WildfireEnviroBMPs](http://www.AustinTexas.gov/WildfireEnviroBMPs)



**Wildfire is a natural occurrence in Central Texas**

**Many local ecosystems actually depend on fire**



- **Fire-adapted community:**  
*“A community of informed and prepared citizens that collaboratively take action to safely co-exist with wildland fire”*



# Firewise Principles and Environmental BMPs Working Together

Firewise  
Principles

A  
Resilient,  
Healthy  
Landscape

Environmental  
Stewardship





# Harden the Structure



# Effective Defensible Space and the Home Ignition Zone



# Account for Topography



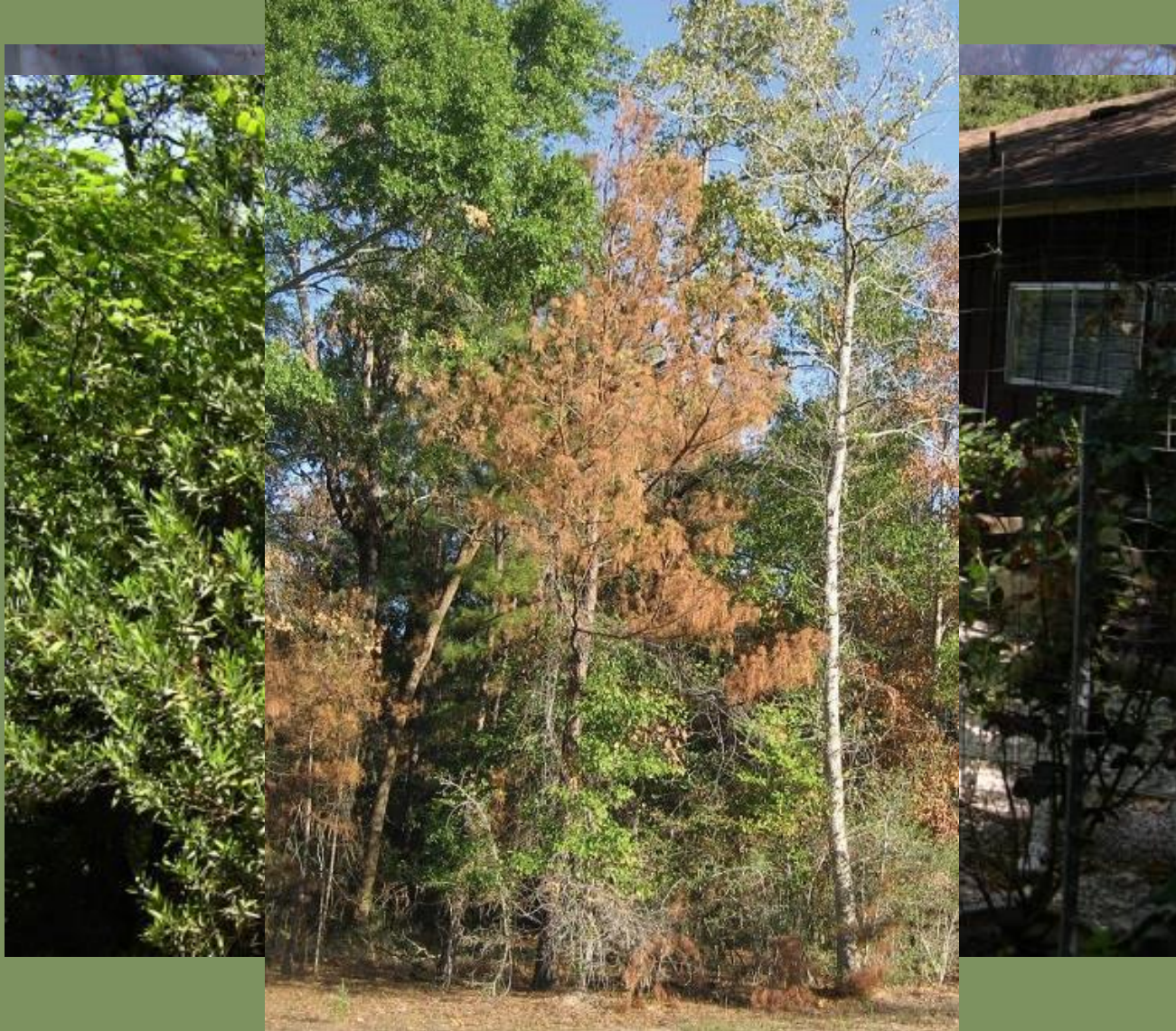
# Limit Fuel Continuity

## Good Examples



# Limit Fuel Continuity

## Bad Examples



# Plant Selection



# Dead Wood, Snags, Brush Piles



# Property Limits

Property management activities are limited to your property.

A photograph of a white sign with black text that reads "NO TRESPASSING". The sign is attached to a metal fence post and is slightly tilted. The background shows a grassy field and trees under a clear sky.

NO TRESPASSING

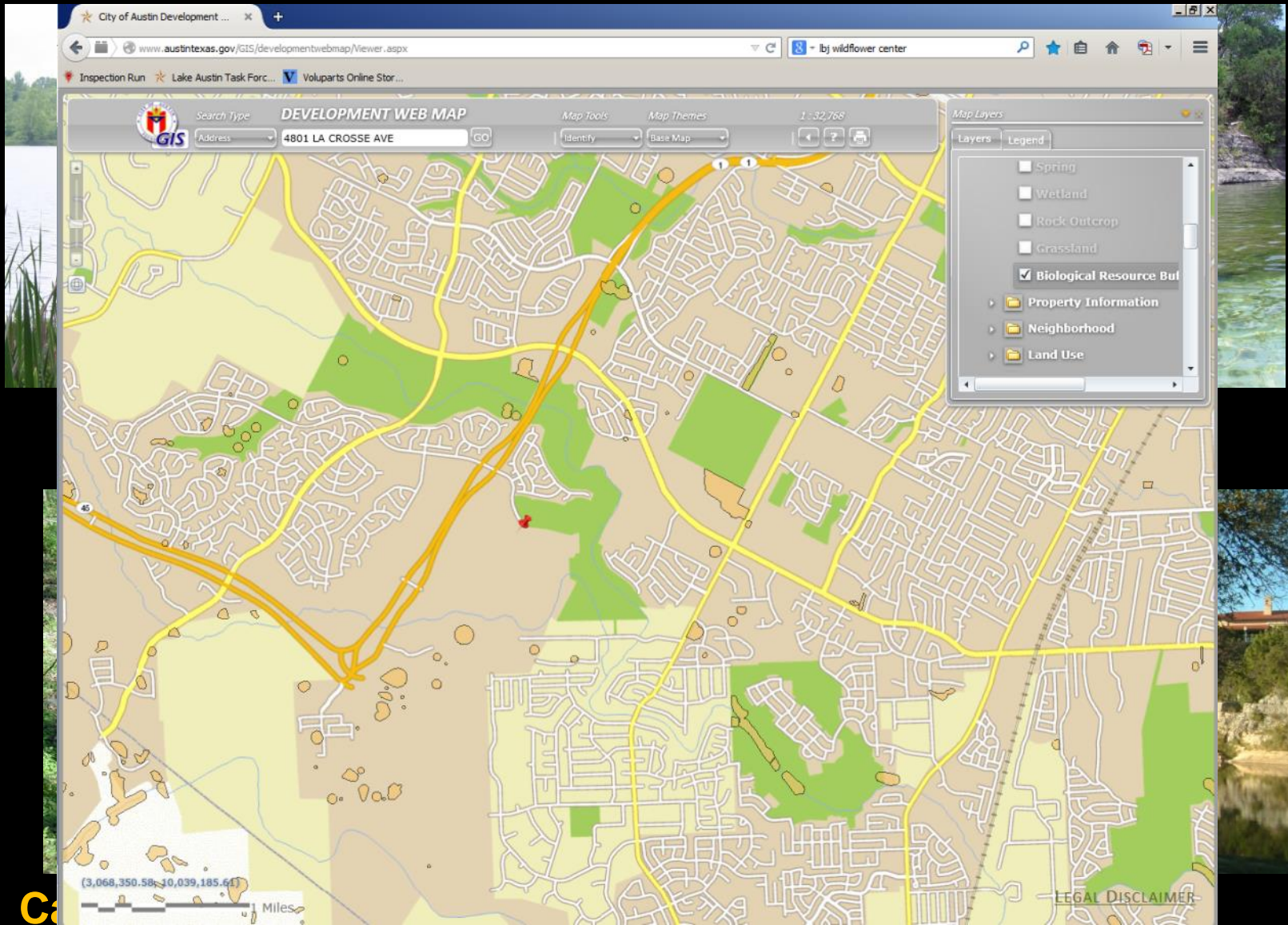


# Property Limits

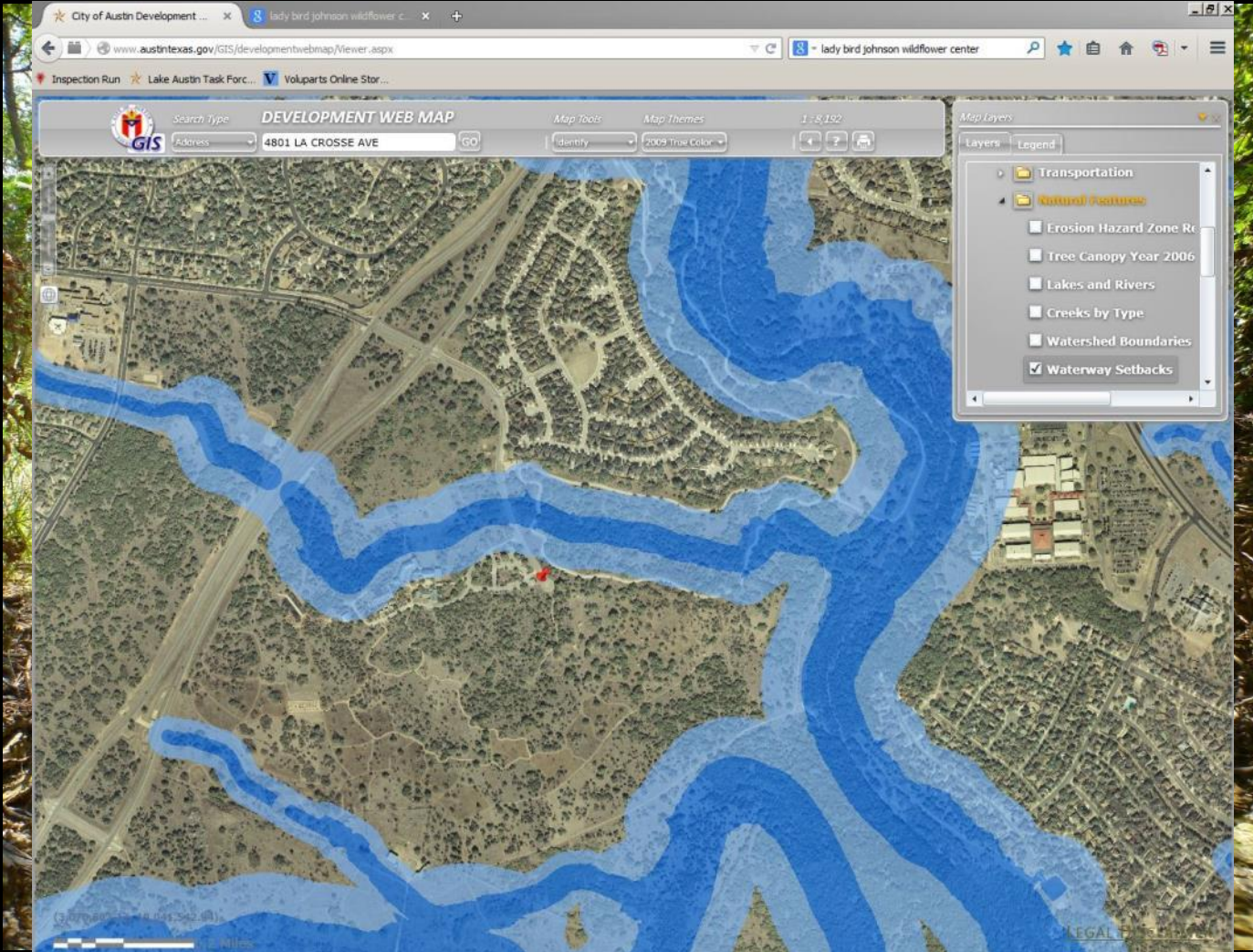
If you have concerns about potentially hazardous conditions on adjacent property, contact the respective landowner.



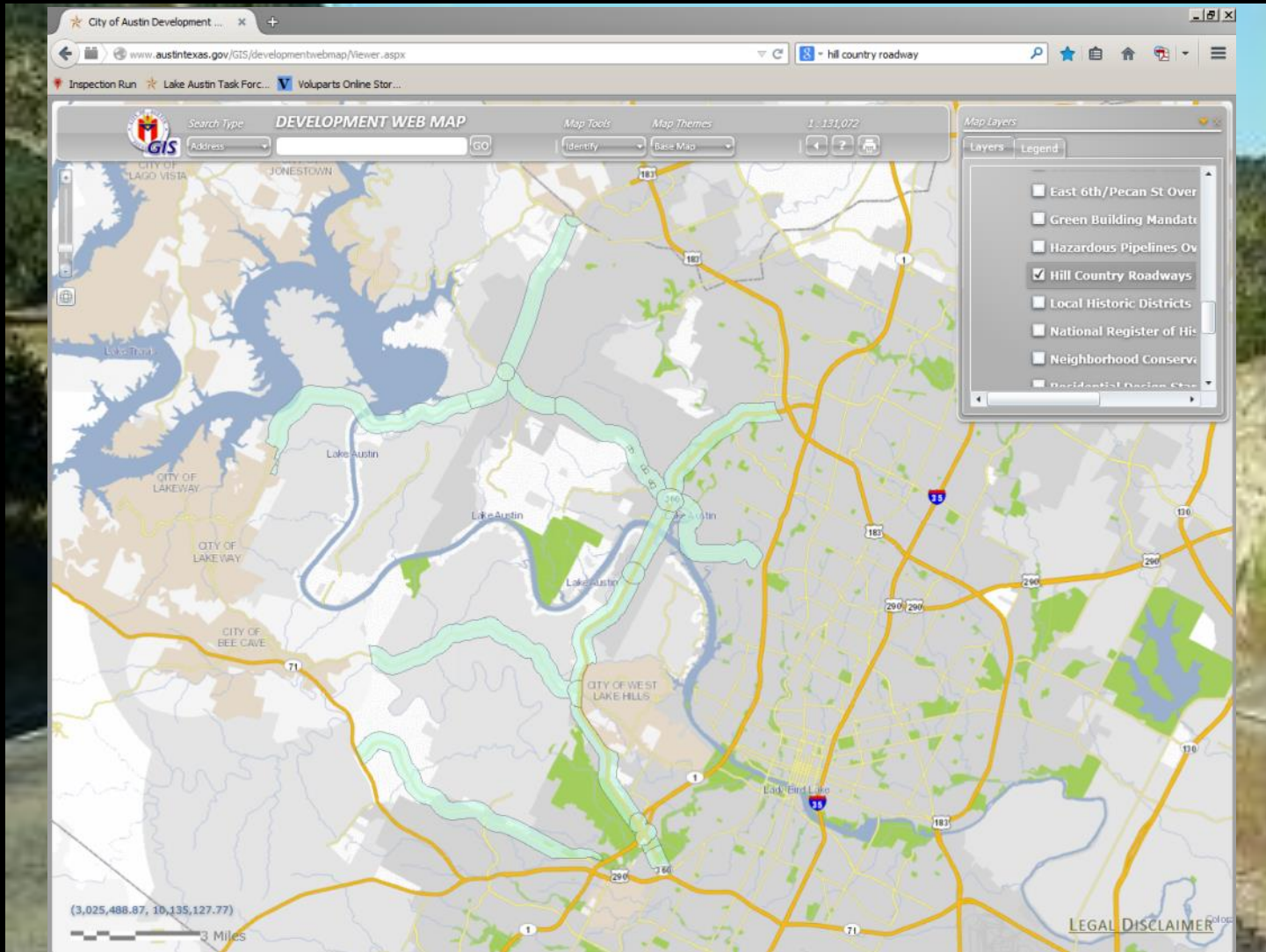
# Critical Environmental Features



# Creeks and associated Setbacks



# Hill Country Roadway Corridors



# Threatened and Endangered Species



January February March April May June July August September October November December



# Brush Disposal



# The Fight Against Catastrophic Wildfire Continues!

Presented by:

Ryan J. Hebrink, LEED AP, CPESC

[Ryan.Hebrink@AustinTexas.gov](mailto:Ryan.Hebrink@AustinTexas.gov)

(512) 974-1910

