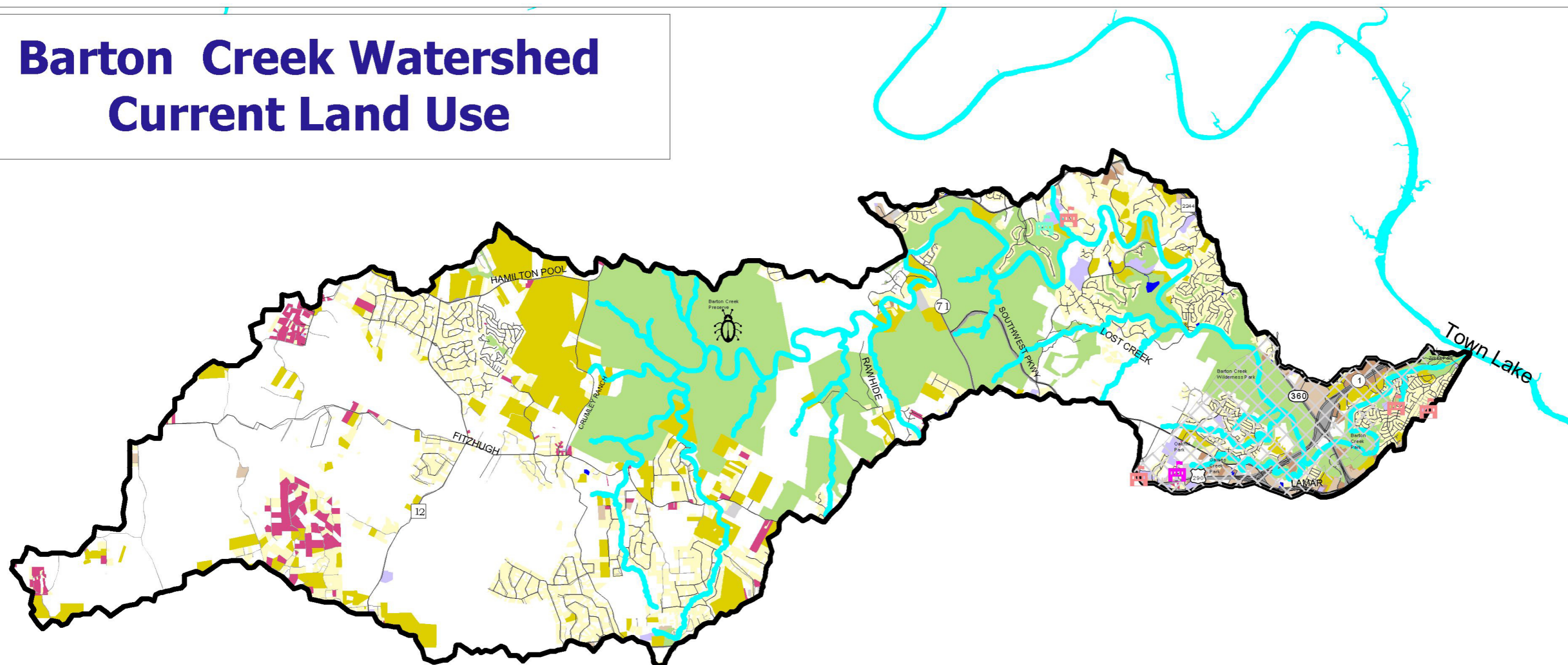


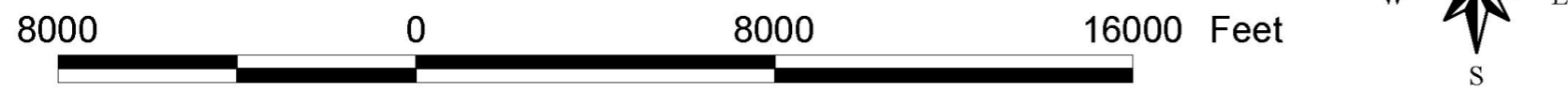
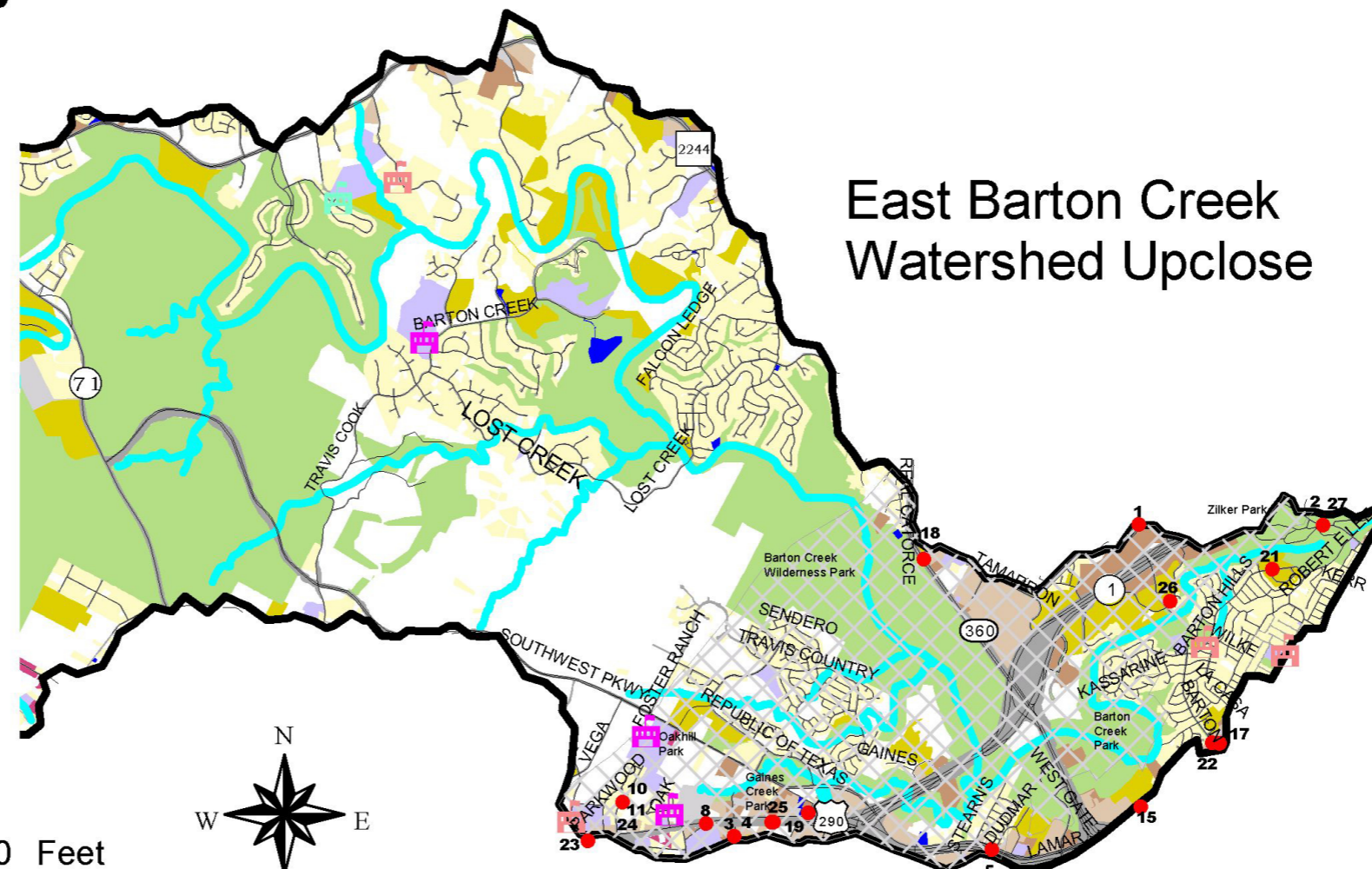
# Barton Creek Watershed Current Land Use



**Population:**  
**2000: 1,159,543**  
**2040: 2,749,995**

**Creek Length: 49 miles**  
**Drainage Area: 109 sq mi**

**Impervious cover: 19.7%**



- Houses
- Apartments
- Stores
- Office
- Industry
- Schools & Community Centers
- Parks
- Transportation
- Undeveloped
- Utilities
- Water
- Mobile Homes
- Roads
- Watershed Boundary
- Barton Creek Preserve
- Edwards Aquifer Recharge Zone
- Elementary School
- Middle School
- Private School
- Stormwater Discharge Permitted Business