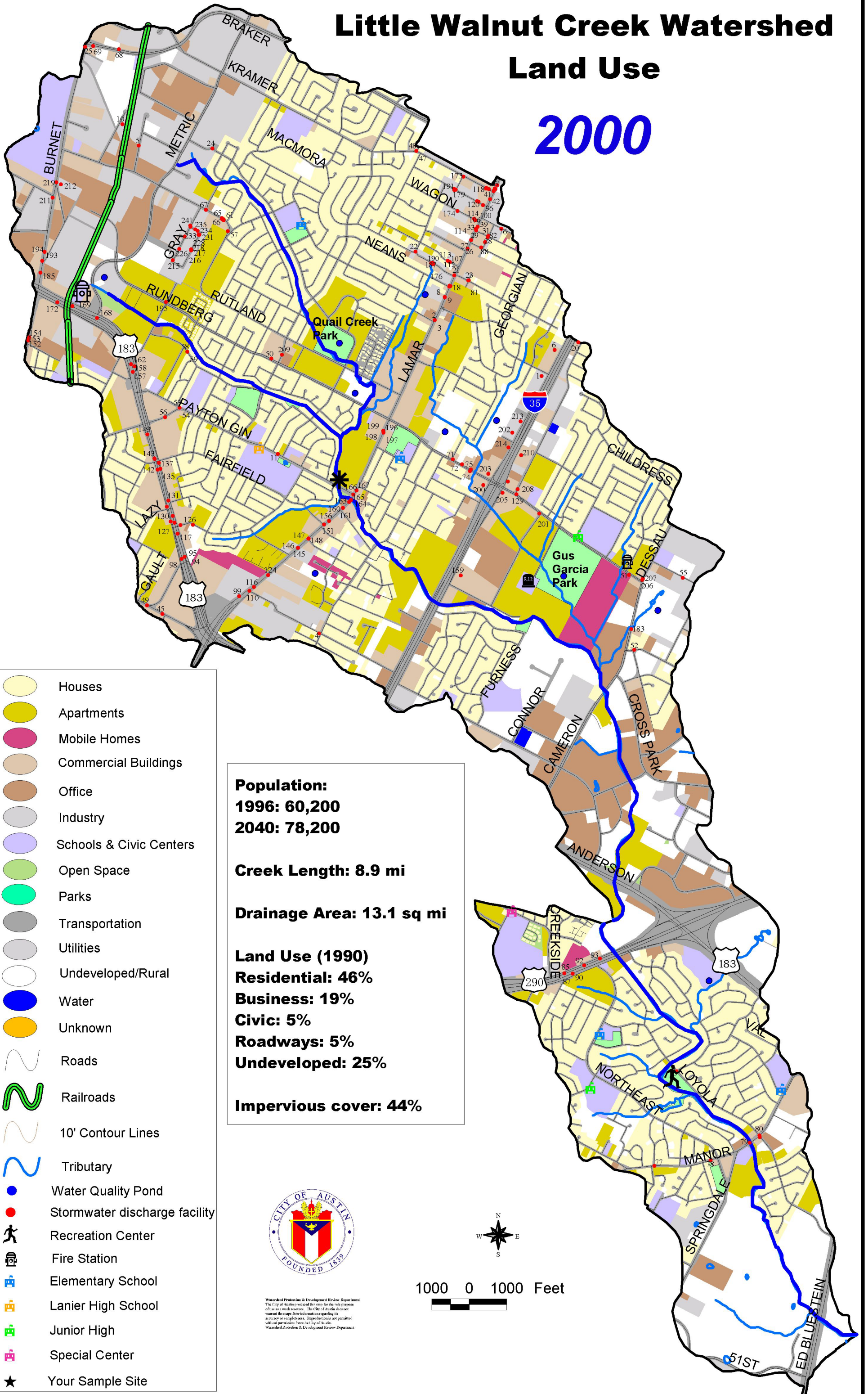


Little Walnut Creek Watershed Land Use 2000



- Houses
- Apartments
- Mobile Homes
- Commercial Buildings
- Office
- Industry
- Schools & Civic Centers
- Open Space
- Parks
- Transportation
- Utilities
- Undeveloped/Rural
- Water
- Unknown
- Roads
- Railroads
- 10' Contour Lines
- Tributary
- Water Quality Pond
- Stormwater discharge facility
- Recreation Center
- Fire Station
- Elementary School
- Lanier High School
- Junior High
- Special Center
- Your Sample Site

Population:
1996: 60,200
2040: 78,200

Creek Length: 8.9 mi

Drainage Area: 13.1 sq mi

Land Use (1990)
Residential: 46%
Business: 19%
Civic: 5%
Roadways: 5%
Undeveloped: 25%

Impervious cover: 44%



1000 0 1000 Feet

Watershed Protection & Development Review Department
 The City of Austin produced this map for the sole purpose
 of use as a work resource. The City of Austin does not
 warrant the maps for information regarding its
 accuracy or completeness. Reproduction is not permitted
 without permission from the City of Austin.
 Watershed Protection & Development Review Department